

A8254

Leader in Biomolecular Solutions for Life Science



CDCP1 Rabbit pAb

Catalog No.: A8254

Basic Information

Observed MW

92kDa/150kDa

Calculated MW

93kDa

Category

Polyclonal Antibody

Applications

WB, ELISA

Cross-Reactivity

Human, Mouse

Background

This gene encodes a transmembrane protein which contains three extracellular CUB domains and acts as a substrate for Src family kinases. The protein plays a role in the tyrosine phosphorylation-dependent regulation of cellular events that are involved in tumor invasion and metastasis. Alternative splicing results in multiple transcript variants of this gene.

Recommended Dilutions

WB 1:500 - 1:2000

Immunogen Information

Gene ID

64866

Swiss Prot

Q9H5V8

Immunogen

Recombinant fusion protein containing a sequence corresponding to amino acids 30-343 of human CDCP1 (NP_835488.1).

Synonyms

CD318; TRASK; SIMA135; CDCP1

Contact



www.abclonal.com

Product Information

Source

Rabbit

Isotype

IgG

Purification

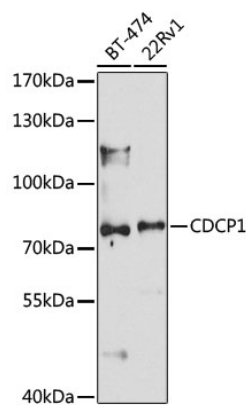
Affinity purification

Storage

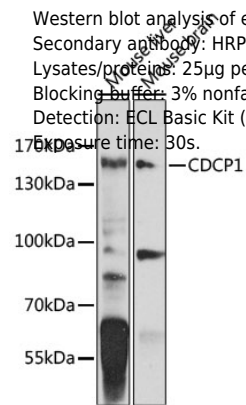
Store at -20°C. Avoid freeze / thaw cycles.

Buffer: PBS with 0.02% sodium azide, 50% glycerol, pH 7.3.

Validation Data



Western blot analysis of extracts of various cell lines, using CDCP1 antibody (A8254) at 1:1000 dilution.
Secondary antibody: HRP Goat Anti-Rabbit IgG (H+L) (AS014) at 1:10000 dilution.
Lysates/proteins: 25µg per lane.
Blocking buffer: 3% nonfat dry milk in TBST.
Detection: ECL Basic Kit (RM00020).
Exposure time: 90s.



Western blot analysis of extracts of various cell lines, using CDCP1 antibody (A8254) at 1:1000 dilution.
Secondary antibody: HRP Goat Anti-Rabbit IgG (H+L) (AS014) at 1:10000 dilution.
Lysates/proteins: 25µg per lane.
Blocking buffer: 3% nonfat dry milk in TBST.
Detection: ECL Basic Kit (RM00020).
Exposure time: 30s.