

A8250

Leader in Biomolecular Solutions for Life Science



## HS1BP3 Rabbit pAb

Catalog No.: A8250

### Basic Information

**Observed MW**

55kDa

**Calculated MW**

43kDa

**Category**

Polyclonal Antibody

**Applications**

WB, ELISA

**Cross-Reactivity**

Human, Mouse, Rat

### Background

The protein encoded by this gene shares similarity with mouse Hs1bp3, an Hcls1/Hs1-interacting protein that may be involved in lymphocyte activation.

### Recommended Dilutions

WB 1:500 - 1:2000

### Immunogen Information

**Gene ID**

64342

**Swiss Prot**

Q53T59

**Immunogen**

Recombinant fusion protein containing a sequence corresponding to amino acids 1-200 of human HS1BP3 (NP\_071905.3).

**Synonyms**

ETM2; HS1-BP3; HS1BP3

### Contact



[www.abclonal.com](http://www.abclonal.com)

### Product Information

**Source**

Rabbit

**Isotype**

IgG

**Purification**

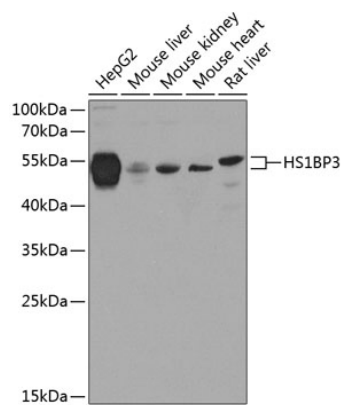
Affinity purification

**Storage**

Store at -20°C. Avoid freeze / thaw cycles.

Buffer: PBS with 0.02% sodium azide, 50% glycerol, pH7.3.

Validation Data



Western blot analysis of extracts of various cell lines, using HS1BP3 antibody (A8250) at 1:1000 dilution.  
Secondary antibody: HRP Goat Anti-Rabbit IgG (H+L) (AS014) at 1:10000 dilution.  
Lysates/proteins: 25µg per lane.  
Blocking buffer: 3% nonfat dry milk in TBST.  
Detection: ECL Basic Kit (RM00020).  
Exposure time: 15s.