

A8109

Leader in Biomolecular Solutions for Life Science



## K-Cadherin (CDH6) Rabbit pAb

Catalog No.: A8109

### Basic Information

**Observed MW**

100kDa

**Calculated MW**

88kDa

**Category**

Polyclonal Antibody

**Applications**

WB, ELISA

**Cross-Reactivity**

Human, Mouse, Rat

### Background

This gene encodes a member of the cadherin superfamily. Cadherins are membrane glycoproteins that mediate homophilic cell-cell adhesion and play critical roles in cell differentiation and morphogenesis. The encoded protein is a type II cadherin and may play a role in kidney development as well as endometrium and placenta formation. Decreased expression of this gene may be associated with tumor growth and metastasis.

### Recommended Dilutions

**WB** 1:500 - 1:2000

### Immunogen Information

**Gene ID**

1004

**Swiss Prot**

P55285

**Immunogen**

Recombinant fusion protein containing a sequence corresponding to amino acids 1-250 of human K-Cadherin (K-Cadherin (CDH6)) (NP\_004923.1).

**Synonyms**

CAD6; KCAD; K-Cadherin (CDH6)

### Contact



[www.abclonal.com](http://www.abclonal.com)

### Product Information

**Source**

Rabbit

**Isotype**

IgG

**Purification**

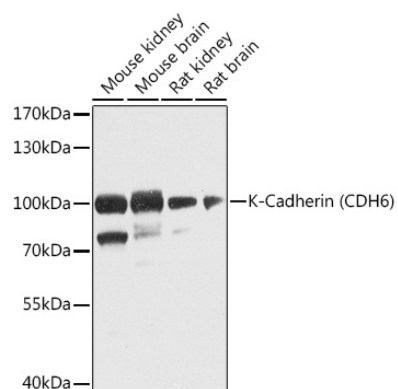
Affinity purification

**Storage**

Store at -20°C. Avoid freeze / thaw cycles.

Buffer: PBS with 0.02% sodium azide, 50% glycerol, pH 7.3.

## Validation Data



Western blot analysis of extracts of various cell lines, using K-Cadherin (K-Cadherin (CDH6)) antibody (A8109) at 1:1000 dilution.

Secondary antibody: HRP Goat Anti-Rabbit IgG (H+L) (AS014) at 1:10000 dilution.

Lysates/proteins: 25µg per lane.

Blocking buffer: 3% nonfat dry milk in TBST.

Detection: ECL Basic Kit (RM00020).

Exposure time: 90s.