

A8041

Leader in Biomolecular Solutions for Life Science



## MYLK Rabbit pAb

Catalog No.: A8041

5 Publications

### Basic Information

#### Observed MW

Refer to figures

#### Calculated MW

211kDa

#### Category

Polyclonal Antibody

#### Applications

WB, IHC-P, ELISA

#### Cross-Reactivity

Human, Mouse, Rat

### Background

This gene, a muscle member of the immunoglobulin gene superfamily, encodes myosin light chain kinase which is a calcium/calmodulin dependent enzyme. This kinase phosphorylates myosin regulatory light chains to facilitate myosin interaction with actin filaments to produce contractile activity. This gene encodes both smooth muscle and nonmuscle isoforms. In addition, using a separate promoter in an intron in the 3' region, it encodes telokin, a small protein identical in sequence to the C-terminus of myosin light chain kinase, that is independently expressed in smooth muscle and functions to stabilize unphosphorylated myosin filaments. A pseudogene is located on the p arm of chromosome 3. Four transcript variants that produce four isoforms of the calcium/calmodulin dependent enzyme have been identified as well as two transcripts that produce two isoforms of telokin. Additional variants have been identified but lack full length transcripts.

### Recommended Dilutions

WB	1:500 - 1:2000
IHC-P	1:50 - 1:100

### Immunogen Information

#### Gene ID

4638

#### Swiss Prot

Q15746

#### Immunogen

Recombinant fusion protein containing a sequence corresponding to amino acids 1765-1914 of human MYLK (NP\_444253.3).

#### Synonyms

KRP; AAT7; MLCK; MLCK1; MMIHS; MYLK1; MMIHS1; MYLK-L; smMLCK; MLCK108; MLCK210; MSTP083; MYLK

### Contact



[www.abclonal.com](http://www.abclonal.com)

### Product Information

#### Source

Rabbit

#### Isotype

IgG

#### Purification

Affinity purification

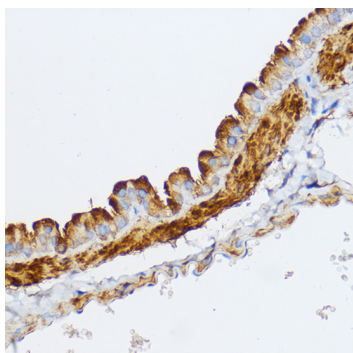
#### Storage

Store at -20°C. Avoid freeze / thaw cycles.

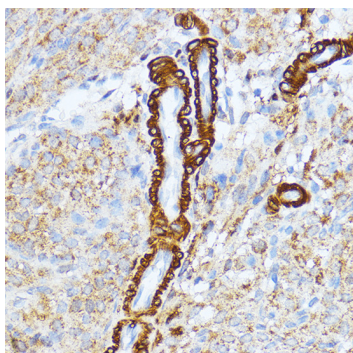
Buffer: PBS with 0.02% sodium azide, 50% glycerol, pH 7.3.

## Validation Data

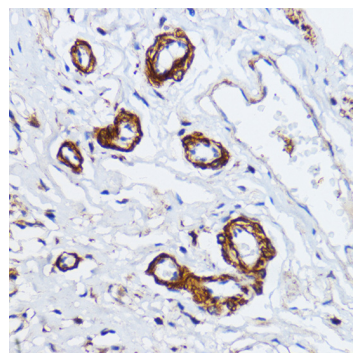
---



Immunohistochemistry analysis of paraffin-embedded Mouse lung using MYLK Rabbit pAb (A8041) at dilution of 1:100 (40x lens). Perform microwave antigen retrieval with 10 mM PBS buffer pH 7.2 before commencing with IHC staining protocol.



Immunohistochemistry analysis of paraffin-embedded Rat ovary using MYLK Rabbit pAb (A8041) at dilution of 1:100 (40x lens). Perform microwave antigen retrieval with 10 mM PBS buffer pH 7.2 before commencing with IHC staining protocol.



Immunohistochemistry analysis of paraffin-embedded Human esophageal using MYLK Rabbit pAb (A8041) at dilution of 1:100 (40x lens). Perform microwave antigen retrieval with 10 mM PBS buffer pH 7.2 before commencing with IHC staining protocol.