

A7953

Leader in Biomolecular Solutions for Life Science



## KDM4A Rabbit pAb

Catalog No.: A7953

1 Publications

### Basic Information

#### Observed MW

150kDa

#### Calculated MW

121kDa

#### Category

Polyclonal Antibody

#### Applications

WB, IHC-P, IP, ELISA

#### Cross-Reactivity

Human, Mouse

### Background

This gene is a member of the Jumonji domain 2 (JMJD2) family and encodes a protein containing a JmjN domain, a JmjC domain, a JD2H domain, two TUDOR domains, and two PHD-type zinc fingers. This nuclear protein functions as a trimethylation-specific demethylase, converting specific trimethylated histone residues to the dimethylated form, and as a transcriptional repressor.

### Recommended Dilutions

WB 1:500 - 1:2000

IHC-P 1:50 - 1:200

IP 0.5µg-4µg antibody for  
200µg-400µg extracts of  
whole cells

### Immunogen Information

#### Gene ID

9682

#### Swiss Prot

O75164

#### Immunogen

Recombinant fusion protein containing a sequence corresponding to amino acids 585-815 of human KDM4A (NP\_055478.2).

#### Synonyms

JMJD2; JHDM3A; JMJD2A; TDRD14A; KDM4A

### Contact



[www.abclonal.com](http://www.abclonal.com)

### Product Information

#### Source

Rabbit

#### Isotype

IgG

#### Purification

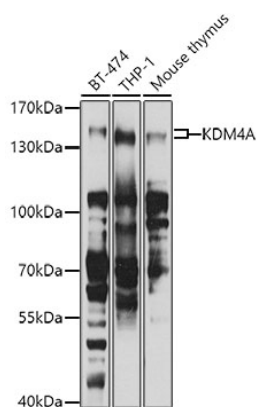
Affinity purification

#### Storage

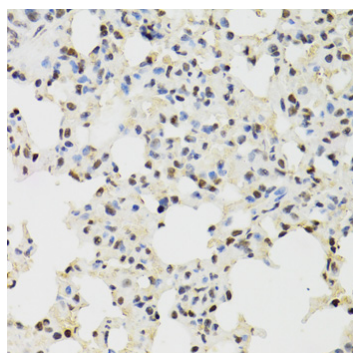
Store at -20°C. Avoid freeze / thaw cycles.

Buffer: PBS with 0.02% sodium azide, 50% glycerol, pH7.3.

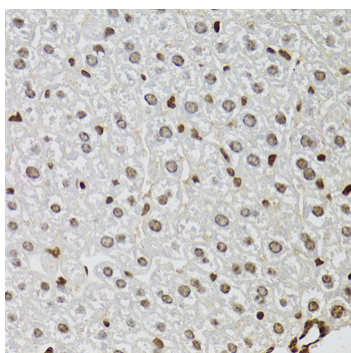
## Validation Data



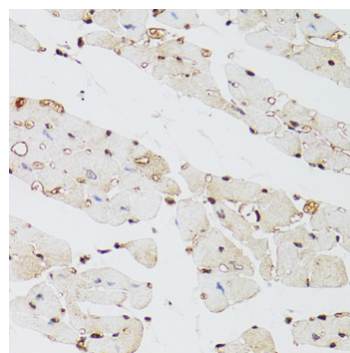
Western blot analysis of various lysates using KDM4A Rabbit pAb (A7953) at 1:1000 dilution.  
Secondary antibody: HRP Goat Anti-Rabbit IgG (H+L) (A5014) at 1:10000 dilution.  
Lysates/proteins: 25µg per lane.  
Blocking buffer: 3% nonfat dry milk in TBST.  
Detection: ECL Basic Kit (RM00020).  
Exposure time: 90s.



Immunohistochemistry analysis of KDM4A in paraffin-embedded mouse lung using KDM4A Rabbit pAb (A7953) at dilution of 1:100 (40x lens). Perform microwave antigen retrieval with 10 mM PBS buffer pH 7.2 before commencing with IHC staining protocol.



Immunohistochemistry analysis of KDM4A in paraffin-embedded mouse liver using KDM4A Rabbit pAb (A7953) at dilution of 1:100 (40x lens). Perform microwave antigen retrieval with 10 mM PBS buffer pH 7.2 before commencing with IHC staining protocol.



Immunohistochemistry analysis of KDM4A in paraffin-embedded mouse heart using KDM4A Rabbit pAb (A7953) at dilution of 1:100 (40x lens). Perform microwave antigen retrieval with 10 mM PBS buffer pH 7.2 before commencing with IHC staining protocol.