

A7943

Leader in Biomolecular Solutions for Life Science



## APOL1 Rabbit pAb

Catalog No.: A7943

### Basic Information

#### Observed MW

Refer to figures

#### Calculated MW

44kDa

#### Category

Polyclonal Antibody

#### Applications

IHC-P, ELISA

#### Cross-Reactivity

Human, Rat

### Background

This gene encodes a secreted high density lipoprotein which binds to apolipoprotein A-I. Apolipoprotein A-I is a relatively abundant plasma protein and is the major apoprotein of HDL. It is involved in the formation of most cholesteryl esters in plasma and also promotes efflux of cholesterol from cells. This apolipoprotein L family member may play a role in lipid exchange and transport throughout the body, as well as in reverse cholesterol transport from peripheral cells to the liver. Several different transcript variants encoding different isoforms have been found for this gene.

### Recommended Dilutions

IHC-P 1:50 - 1:100

### Immunogen Information

#### Gene ID

8542

#### Swiss Prot

O14791

#### Immunogen

Recombinant fusion protein containing a sequence corresponding to amino acids 179-398 of human APOL1 (NP\_003652.2).

#### Synonyms

APOL; APO-L; FSGS4; APOL-I; APOL1

### Contact



[www.abclonal.com](http://www.abclonal.com)

### Product Information

#### Source

Rabbit

#### Isotype

IgG

#### Purification

Affinity purification

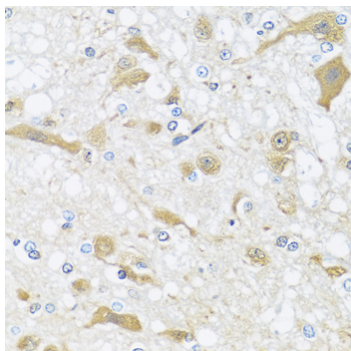
#### Storage

Store at -20°C. Avoid freeze / thaw cycles.

Buffer: PBS with 0.02% sodium azide, 50% glycerol, pH 7.3.

## Validation Data

---



Immunohistochemistry analysis of paraffin-embedded rat brain using APOL1 antibody (A7943) at dilution of 1:100 (40x lens). Perform microwave antigen retrieval with 10 mM PBS buffer pH 7.2 before commencing with IHC staining protocol.