

MTX1 Rabbit pAb

Catalog No.: A7912

Basic Information

Observed MW

36kDa

Calculated MW

51kDa

Category

Primary antibody

Applications

ELISA, WB

Cross-Reactivity

Rat

Background

Predicted to be involved in mitochondrion organization. Part of MIB complex and SAM complex.

Recommended Dilutions

WB 1:500 - 1:1000

Immunogen Information

Gene ID

4580

Swiss Prot

Q13505

Immunogen

Recombinant fusion protein containing a sequence corresponding to amino acids 186-435 of human MTX1 (NP_942584.2).

Synonyms

MTX; MTXN; MTX1

Contact

 | www.abclonal.com

Product Information

Source

Rabbit

Isotype

IgG

Purification

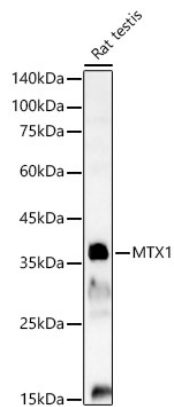
Affinity purification

Storage

Store at -20°C. Avoid freeze / thaw cycles.

Buffer: PBS with 0.02% sodium azide, 50% glycerol, pH 7.3.

Validation Data



Western blot analysis of Rat testis, using MTX1 Rabbit pAb (A7912) at 1:1000 dilution.
Secondary antibody: HRP Goat Anti-Rabbit IgG (H+L) (A5014) at 1:10000 dilution.
Lysates/proteins: 25µg per lane.
Blocking buffer: 3% nonfat dry milk in TBST.
Detection: ECL Basic Kit (RM00020).
Exposure time: 60s.