

A7883

Leader in Biomolecular Solutions for Life Science



## [KO Validated] CHD1 Rabbit pAb

Catalog No.: A7883 **KO** Validated

### Basic Information

#### Observed MW

250kDa

#### Calculated MW

197kDa

#### Category

Polyclonal Antibody

#### Applications

WB, IHC-P, ELISA

#### Cross-Reactivity

Human, Mouse, Rat

### Background

The CHD family of proteins is characterized by the presence of chromo (chromatin organization modifier) domains and SNF2-related helicase/ATPase domains. CHD genes alter gene expression possibly by modification of chromatin structure thus altering access of the transcriptional apparatus to its chromosomal DNA template.

### Recommended Dilutions

WB	1:100 - 1:500
IHC-P	1:100 - 1:200

### Immunogen Information

Gene ID	Swiss Prot
1105	O14646

#### Immunogen

A synthetic peptide corresponding to a sequence within amino acids 1600 to the C-terminus of human CHD1 (NP\_001261.2).

#### Synonyms

CHD-1; PILBOS; D1

### Contact



[www.abclonal.com](http://www.abclonal.com)

### Product Information

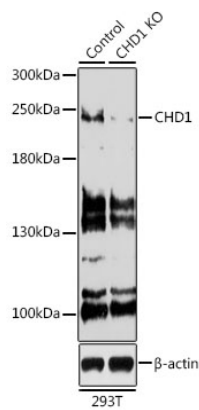
Source	Isotype	Purification
Rabbit	IgG	Affinity purification

#### Storage

Store at -20°C. Avoid freeze / thaw cycles.

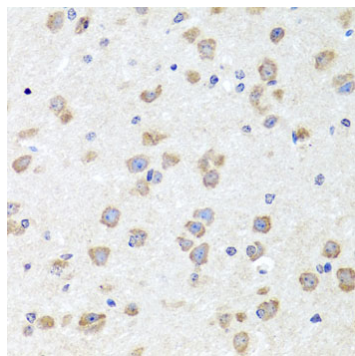
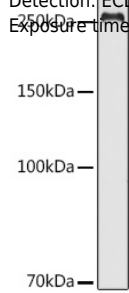
Buffer: PBS with 0.02% sodium azide, 50% glycerol, pH 7.3.

Validation Data

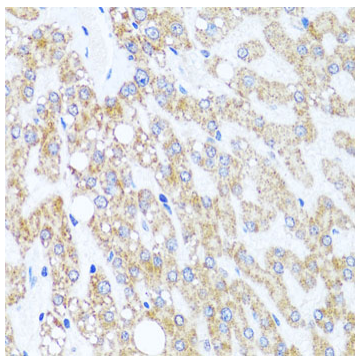


Western blot analysis of extracts from normal (control) and CHD1 knockout (KO) 293T cells, using CHD1 antibody (A7883) at 1:500 dilution.  
Secondary antibody: HRP Goat Anti-Rabbit IgG (H+L) (AS014) at 1:10000 dilution.  
Lysates/proteins: 25µg per lane.  
Blocking buffer: 3% nonfat dry milk in TBST.  
Detection: ECL Basic Kit (RM00020).  
Exposure time: 90s.

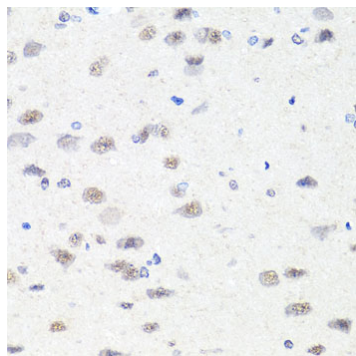
Western blot analysis of extracts of Jurkat cells, using CHD1 antibody (A7883) at 1:500 dilution.  
Secondary antibody: HRP Goat Anti-Rabbit IgG (H+L) (AS014) at 1:10000 dilution.  
Lysates/proteins: 25µg per lane.  
Blocking buffer: 3% nonfat dry milk in TBST.  
Detection: ECL Basic Kit (RM00020).  
Exposure time: 90s.



Immunohistochemistry analysis of paraffin-embedded mouse brain using CHD1 antibody (A7883) at dilution of 1:100 (40x lens).Perform microwave antigen retrieval with 10 mM PBS buffer pH 7.2 before commencing with IHC staining protocol.



Immunohistochemistry analysis of paraffin-embedded human liver damage using CHD1 antibody (A7883) at dilution of 1:100 (40x lens).Perform microwave antigen retrieval with 10 mM PBS buffer pH 7.2 before commencing with IHC staining protocol.



Immunohistochemistry analysis of paraffin-embedded rat brain using CHD1 antibody (A7883) at dilution of 1:100 (40x lens).Perform microwave antigen retrieval with 10 mM PBS buffer pH 7.2 before commencing with IHC staining protocol.