

A7794

Leader in Biomolecular Solutions for Life Science



## [KO Validated] SAMHD1 Rabbit pAb

Catalog No.: A7794

**KO** Validated

1 Publications

### Basic Information

#### Observed MW

72kDa

#### Calculated MW

72kDa

#### Category

Polyclonal Antibody

#### Applications

WB, IHC-P, IP, ELISA

#### Cross-Reactivity

Human, Mouse, Rat

### Background

This gene may play a role in regulation of the innate immune response. The encoded protein is upregulated in response to viral infection and may be involved in mediation of tumor necrosis factor-alpha proinflammatory responses. Mutations in this gene have been associated with Aicardi-Goutieres syndrome.

### Recommended Dilutions

**WB** 1:500 - 1:2000

**IHC-P** 1:50 - 1:200

**IP** 0.5µg-4µg antibody for  
200µg-400µg extracts of  
whole cells

### Immunogen Information

#### Gene ID

25939

#### Swiss Prot

Q9Y3Z3

#### Immunogen

Recombinant fusion protein containing a sequence corresponding to amino acids 387-626 of human SAMHD1 (NP\_056289.2).

#### Synonyms

DCIP; CHBL2; HDDC1; MOP-5; SBBI88; hSAMHD1; D1

### Contact



[www.abclonal.com](http://www.abclonal.com)

### Product Information

#### Source

Rabbit

#### Isotype

IgG

#### Purification

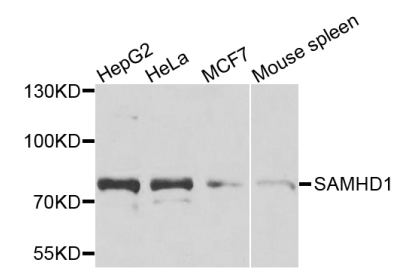
Affinity purification

#### Storage

Store at -20°C. Avoid freeze / thaw cycles.

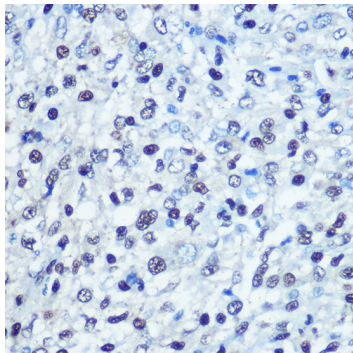
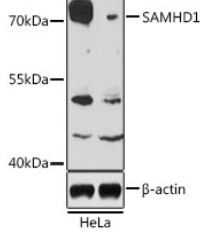
Buffer: PBS with 0.02% sodium azide, 50% glycerol, pH7.3.

Validation Data



Western blot analysis of various lysates using [KO Validated] SAMHD1 Rabbit pAb (A7794) at 1:1000 dilution.  
Secondary antibody: HRP Goat Anti-Rabbit IgG (H+L) (AS014) at 1:10000 dilution.  
Lysates/proteins: 25µg per lane.  
Blocking buffer: 3% nonfat dry milk in TBST.  
Detection: ECL Basic Kit (RM00020).  
Exposure time: 90s.

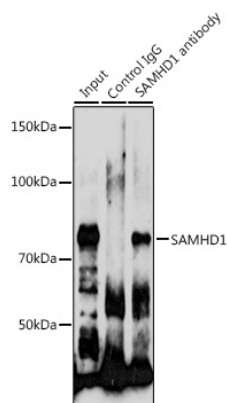
Western blot analysis of lysates from wild type (WT) and SAMHD1 knockout (KO) HeLa cells, using [KO Validated] SAMHD1 Rabbit pAb (A7794) at 1:1000 dilution.  
Secondary antibody: HRP Goat Anti-Rabbit IgG (H+L) (AS014) at 1:10000 dilution.  
Lysates/proteins: 25µg per lane.  
Blocking buffer: 3% nonfat dry milk in TBST.  
Detection: ECL Basic Kit (RM00020).  
Exposure time: 3min.



Immunohistochemistry analysis of SAMHD1 in paraffin-embedded human liver cancer using [KO Validated] SAMHD1 Rabbit pAb (A7794) at dilution of 1:100 (40x lens). Perform microwave antigen retrieval with 10 mM PBS buffer pH 7.2 before commencing with IHC staining protocol.

## Validation Data

---



Immunoprecipitation analysis of 200 µg extracts of HeLa cells using 3 µg SAMHD1 antibody (A7794). Western blot was performed from the immunoprecipitate using SAMHD1 antibody (A7794) at a dilution of 1:1000.