

A7782

Leader in Biomolecular Solutions for Life Science



GABARAPL2 Rabbit pAb

Catalog No.: A7782

1 Publications

Basic Information

Observed MW

14kDa

Calculated MW

14kDa

Category

Mouse Monoclonal Antibody

Applications

WB, IHC-P, ELISA

Cross-Reactivity

Human, Mouse, Rat

Background

Enables ubiquitin protein ligase binding activity. Involved in negative regulation of proteasomal protein catabolic process and protein localization to endoplasmic reticulum. Located in Golgi membrane and autophagosome membrane.

Recommended Dilutions

WB	1:500 - 1:2000
IHC-P	1:50 - 1:200

Immunogen Information

Gene ID

11345

Swiss Prot

P60520

Immunogen

Recombinant fusion protein containing a sequence corresponding to amino acids 1-117 of human GABARAPL2 (NP_009216.1).

Synonyms

ATG8; GEF2; ATG8C; GEF-2; GATE16; GATE-16; GABARAPL2

Contact



www.abclonal.com

Product Information

Source

Rabbit

Isotype

IgG

Purification

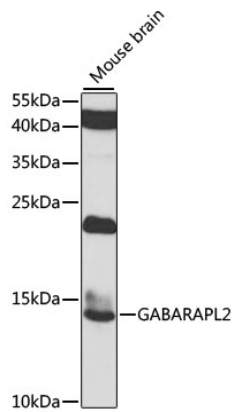
Affinity purification

Storage

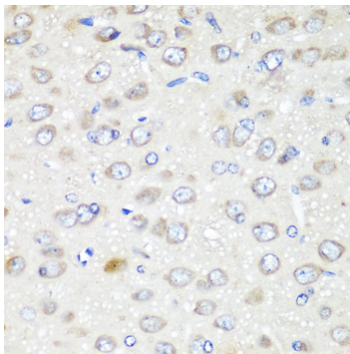
Store at -20°C. Avoid freeze / thaw cycles.

Buffer: PBS with 0.02% sodium azide, 50% glycerol, pH7.3.

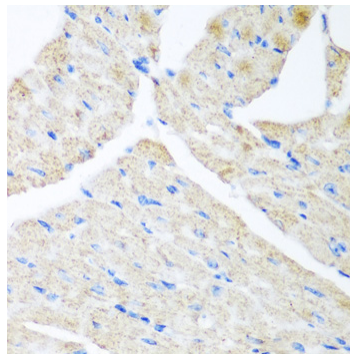
Validation Data



Western blot analysis of extracts of mouse brain, using GABARAPL2 antibody (A7782) at 1:1000 dilution.
Secondary antibody: HRP Goat Anti-Rabbit IgG (H+L) (A5014) at 1:10000 dilution.
Lysates/proteins: 25µg per lane.
Blocking buffer: 3% nonfat dry milk in TBST.
Detection: ECL Basic Kit (RM00020).
Exposure time: 30s.



Immunohistochemistry analysis of paraffin-embedded rat brain using GABARAPL2 antibody (A7782) at dilution of 1:200 (40x lens). Perform microwave antigen retrieval with 10 mM PBS buffer pH 7.2 before commencing with IHC staining protocol.



Immunohistochemistry analysis of paraffin-embedded mouse heart using GABARAPL2 antibody (A7782) at dilution of 1:200 (40x lens). Perform microwave antigen retrieval with 10 mM PBS buffer pH 7.2 before commencing with IHC staining protocol.