

A7741

Leader in Biomolecular Solutions for Life Science



## DNA topoisomerase I (TOP1) Rabbit pAb

Catalog No.: A7741

1 Publications

### Basic Information

#### Observed MW

108kDa

#### Calculated MW

91kDa

#### Category

Polyclonal Antibody

#### Applications

WB, ELISA

#### Cross-Reactivity

Human, Mouse

### Background

This gene encodes a DNA topoisomerase, an enzyme that controls and alters the topologic states of DNA during transcription. This enzyme catalyzes the transient breaking and rejoining of a single strand of DNA which allows the strands to pass through one another, thus altering the topology of DNA. This gene is localized to chromosome 20 and has pseudogenes which reside on chromosomes 1 and 22.

### Recommended Dilutions

WB 1:500 - 1:2000

### Immunogen Information

#### Gene ID

7150

#### Swiss Prot

P11387

#### Immunogen

A synthetic peptide corresponding to a sequence within amino acids 1-100 of human DNA topoisomerase I (DNA topoisomerase I (TOP1)) (NP\_003277.1).

#### Synonyms

TOPI; DNA topoisomerase I (TOP1)

### Contact



[www.abclonal.com](http://www.abclonal.com)

### Product Information

#### Source

Rabbit

#### Isotype

IgG

#### Purification

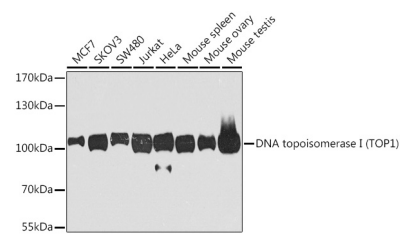
Affinity purification

#### Storage

Store at -20°C. Avoid freeze / thaw cycles.

Buffer: PBS with 0.02% sodium azide, 50% glycerol, pH 7.3.

# Validation Data



Western blot analysis of various lysates using DNA topoisomerase I (TOP1) Rabbit pAb (A7741) at 1:1000 dilution.  
Secondary antibody: HRP Goat Anti-Rabbit IgG (H+L) (AS014) at 1:10000 dilution.  
Lysates/proteins: 25µg per lane.  
Blocking buffer: 3% nonfat dry milk in TBST.  
Detection: ECL Basic Kit (RM00020).  
Exposure time: 90s.