

A7728

Leader in Biomolecular Solutions for Life Science



## SKP2 Rabbit pAb

Catalog No.: A7728

2 Publications

### Basic Information

#### Observed MW

45kDa

#### Calculated MW

48kDa

#### Category

Polyclonal Antibody

#### Applications

WB, IF/ICC, ELISA

#### Cross-Reactivity

Human, Mouse, Rat

### Background

This gene encodes a member of the F-box protein family which is characterized by an approximately 40 amino acid motif, the F-box. The F-box proteins constitute one of the four subunits of ubiquitin protein ligase complex called SCFs (SKP1-cullin-F-box), which function in phosphorylation-dependent ubiquitination. The F-box proteins are divided into 3 classes: Fbws containing WD-40 domains, Fbls containing leucine-rich repeats, and Fbxs containing either different protein-protein interaction modules or no recognizable motifs. The protein encoded by this gene belongs to the Fbls class; in addition to an F-box, this protein contains 10 tandem leucine-rich repeats. This protein is an essential element of the cyclin A-CDK2 S-phase kinase. It specifically recognizes phosphorylated cyclin-dependent kinase inhibitor 1B (CDKN1B, also referred to as p27 or KIP1) predominantly in S phase and interacts with S-phase kinase-associated protein 1 (SKP1 or p19). In addition, this gene is established as a protooncogene causally involved in the pathogenesis of lymphomas. Alternative splicing of this gene generates three transcript variants encoding different isoforms.

### Recommended Dilutions

WB	1:500 - 1:2000
IF/ICC	1:50 - 1:200

### Immunogen Information

#### Gene ID

6502

#### Swiss Prot

Q13309

#### Immunogen

A synthetic peptide corresponding to a sequence within amino acids 1-100 of human SKP2 (NP\_005974.2).

#### Synonyms

p45; FBL1; FLB1; FBXL1; SKP2

### Contact



[www.abclonal.com](http://www.abclonal.com)

### Product Information

#### Source

Rabbit

#### Isotype

IgG

#### Purification

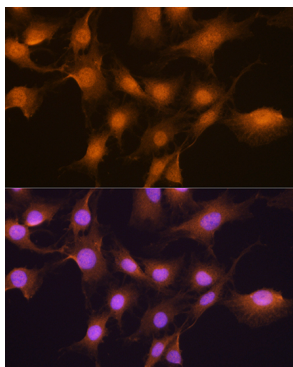
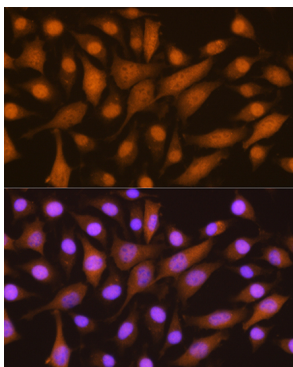
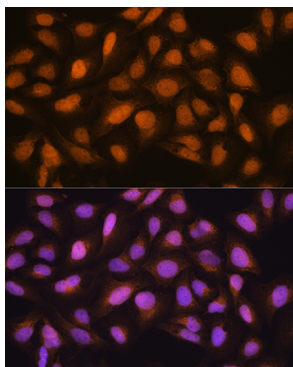
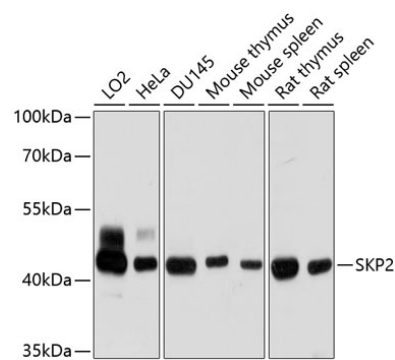
Affinity purification

#### Storage

Store at -20°C. Avoid freeze / thaw cycles.

Buffer: PBS with 0.02% sodium azide, 50% glycerol, pH 7.3.

Validation Data



Immunofluorescence analysis of U2OS cells using SKP2 Rabbit pAb (A7728) at dilution of 1:100. Blue: DAPI for nuclear staining.

Immunofluorescence analysis of L929 cells using SKP2 Rabbit pAb (A7728) at dilution of 1:100. Blue: DAPI for nuclear staining.

Immunofluorescence analysis of C6 cells using SKP2 Rabbit pAb (A7728) at dilution of 1:100. Blue: DAPI for nuclear staining.