

A7654

Leader in Biomolecular Solutions for Life Science



CHI3L2 Rabbit pAb

Catalog No.: A7654

Basic Information

Observed MW

40kDa

Calculated MW

44kDa

Category

Polyclonal Antibody

Applications

WB, IHC-P, ELISA

Cross-Reactivity

Human

Background

The protein encoded by this gene is similar to bacterial chitinases but lacks chitinase activity. The encoded protein is secreted and is involved in cartilage biogenesis. Several transcript variants encoding different isoforms have been found for this gene.

Recommended Dilutions

WB	1:500 - 1:2000
IHC-P	1:50 - 1:200

Immunogen Information

Gene ID

1117

Swiss Prot

Q15782

Immunogen

Recombinant fusion protein containing a sequence corresponding to amino acids 27-390 of human CHI3L2 (NP_003991.2).

Synonyms

CHIL2; YKL39; YKL-39; CHI3L2

Contact



www.abclonal.com

Product Information

Source

Rabbit

Isotype

IgG

Purification

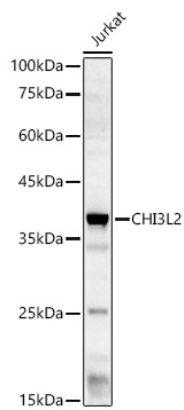
Affinity purification

Storage

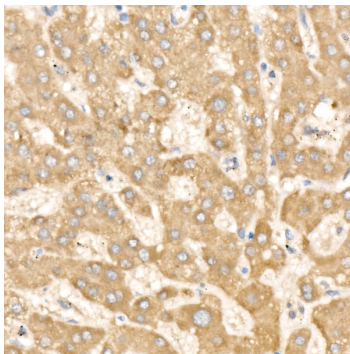
Store at -20°C. Avoid freeze / thaw cycles.

Buffer: PBS with 0.02% sodium azide, 50% glycerol, pH7.3.

Validation Data



Western blot analysis of Jurkat, using CHI3L2 Rabbit pAb (A7654) at 1:2000 dilution.
Secondary antibody: HRP Goat Anti-Rabbit IgG (H+L) (A5014) at 1:10000 dilution.
Lysates/proteins: 25µg per lane.
Blocking buffer: 3% nonfat dry milk in TBST.
Detection: ECL Basic Kit (RM00020).
Exposure time: 60s.



Immunohistochemistry analysis of paraffin-embedded human liver using CHI3L2 Rabbit pAb (A7654) at dilution of 1:100 (40x lens). Perform high pressure antigen retrieval with 10 mM citrate buffer pH 6.0 before commencing with IHC staining protocol.