

A7640

Leader in Biomolecular Solutions for Life Science



UBIAD1 Rabbit pAb

Catalog No.: A7640

Basic Information

Observed MW

41kDa

Calculated MW

37kDa

Category

Mouse Monoclonal Antibody

Applications

WB, IHC-P, ELISA

Cross-Reactivity

Human, Mouse, Rat

Background

This gene encodes a protein thought to be involved in cholesterol and phospholipid metabolism. Mutations in this gene are associated with Schnyder crystalline corneal dystrophy.

Recommended Dilutions

WB	1:500 - 1:2000
IHC-P	1:100 - 1:200

Immunogen Information

Gene ID

29914

Swiss Prot

Q9Y5Z9

Immunogen

A synthetic peptide corresponding to a sequence within amino acids 1-100 of human UBIAD1 (NP_037451.1).

Synonyms

SCCD; TERE1; UBIAD1

Contact



www.abclonal.com

Product Information

Source

Rabbit

Isotype

IgG

Purification

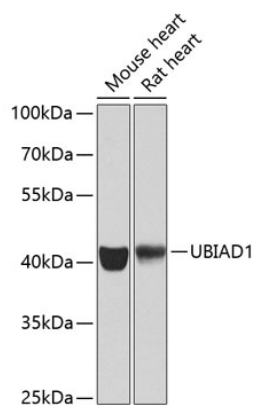
Affinity purification

Storage

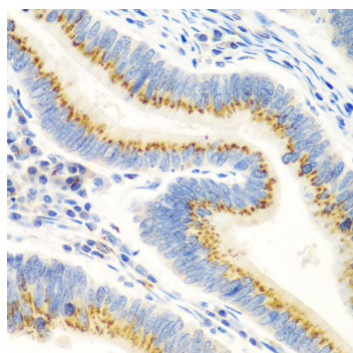
Store at -20°C. Avoid freeze / thaw cycles.

Buffer: PBS with 0.02% sodium azide, 50% glycerol, pH 7.3.

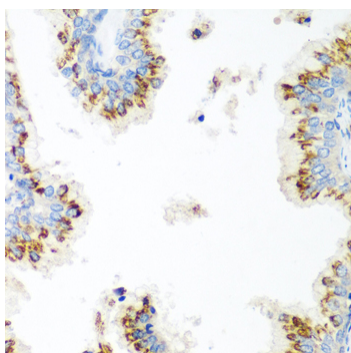
Validation Data



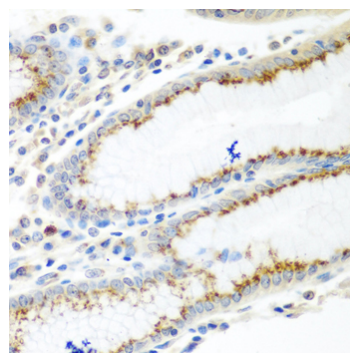
Western blot analysis of extracts of various cell lines, using UBIAD1 antibody (A7640) at 1:1000 dilution. Secondary antibody: HRP Goat Anti-Rabbit IgG (H+L) (AS014) at 1:10000 dilution. Lysates/proteins: 25µg per lane. Blocking buffer: 3% nonfat dry milk in TBST. Detection: ECL Enhanced Kit (RM00021). Exposure time: 60s.



Immunohistochemistry analysis of paraffin-embedded human colon carcinoma using UBIAD1 antibody (A7640) at dilution of 1:100 (40x lens). Perform microwave antigen retrieval with 10 mM PBS buffer pH 7.2 before commencing with IHC staining protocol.



Immunohistochemistry analysis of paraffin-embedded human prostate using UBIAD1 antibody (A7640) at dilution of 1:100 (40x lens). Perform microwave antigen retrieval with 10 mM PBS buffer pH 7.2 before commencing with IHC staining protocol.



Immunohistochemistry analysis of paraffin-embedded human stomach using UBIAD1 antibody (A7640) at dilution of 1:100 (40x lens). Perform microwave antigen retrieval with 10 mM PBS buffer pH 7.2 before commencing with IHC staining protocol.