

A7639

Leader in Biomolecular Solutions for Life Science



## YWHAZ Rabbit pAb

Catalog No.: A7639

1 Publications

### Basic Information

#### Observed MW

28kDa

#### Calculated MW

28kDa

#### Category

Polyclonal Antibody

#### Applications

WB, IHC-P, IF/ICC, ELISA

#### Cross-Reactivity

Human, Mouse, Rat

### Background

This gene product belongs to the 14-3-3 family of proteins which mediate signal transduction by binding to phosphoserine-containing proteins. This highly conserved protein family is found in both plants and mammals, and this protein is 99% identical to the mouse, rat and sheep orthologs. The encoded protein interacts with IRS1 protein, suggesting a role in regulating insulin sensitivity. Several transcript variants that differ in the 5' UTR but that encode the same protein have been identified for this gene.

### Recommended Dilutions

WB	1:500 - 1:2000
IHC-P	1:50 - 1:200
IF/ICC	1:50 - 1:200

### Immunogen Information

#### Gene ID

7534

#### Swiss Prot

P63104

#### Immunogen

A synthetic peptide corresponding to a sequence within amino acids 146-245 of human YWHAZ (NP\_003397.1).

#### Synonyms

HEL4; YWHAD; KCIP-1; HEL-S-3; POPCHAS; HEL-S-93; 14-3-3-zeta; YWHAZ

### Contact



[www.abclonal.com](http://www.abclonal.com)

### Product Information

#### Source

Rabbit

#### Isotype

IgG

#### Purification

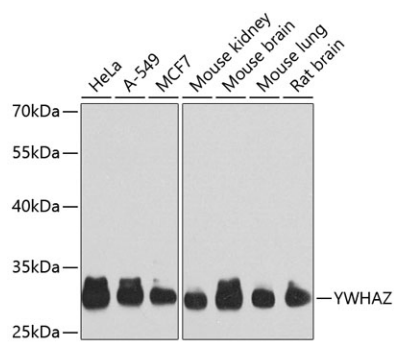
Affinity purification

#### Storage

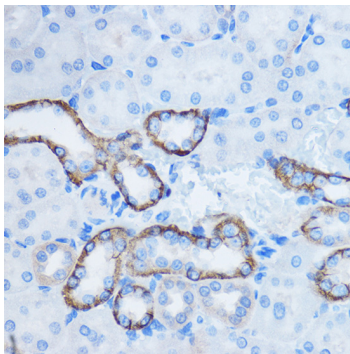
Store at -20°C. Avoid freeze / thaw cycles.

Buffer: PBS with 0.01% thimerosal, 50% glycerol, pH 7.3.

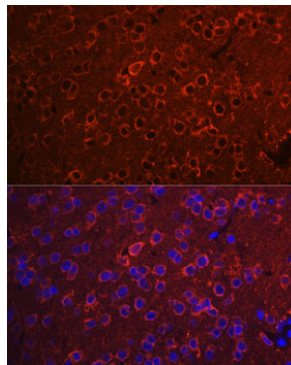
## Validation Data



Western blot analysis of extracts of various cell lines, using YWHAZ Antibody (A7639) at 1:1000 dilution.  
Secondary antibody: HRP Goat Anti-Rabbit IgG (H+L) (A5014) at 1:10000 dilution.  
Lysates/proteins: 25µg per lane.  
Blocking buffer: 3% nonfat dry milk in TBST.  
Detection: ECL Basic Kit (RM00020).  
Exposure time: 30s.



Immunohistochemistry analysis of paraffin-embedded Rat kidney using YWHAZ Rabbit pAb (A7639) at dilution of 1:100 (40x lens). Perform microwave antigen retrieval with 10 mM PBS buffer pH 7.2 before commencing with IHC staining protocol.



Immunofluorescence analysis of Rat brain using YWHAZ Rabbit pAb (A7639) at dilution of 1:100. Blue: DAPI for nuclear staining.