

A7629

Leader in Biomolecular Solutions for Life Science



[KO Validated] Integrin alpha 2 (ITGA2/CD49b) Rabbit pAb

Catalog No.: A7629

KO Validated

4 Publications

Basic Information

Observed MW

150kDa

Calculated MW

129kDa

Category

Polyclonal Antibody

Applications

WB, IHC-P, IF/ICC, ELISA

Cross-Reactivity

Human, Mouse, Rat

Background

This gene encodes the alpha subunit of a transmembrane receptor for collagens and related proteins. The encoded protein forms a heterodimer with a beta subunit and mediates the adhesion of platelets and other cell types to the extracellular matrix. Loss of the encoded protein is associated with bleeding disorder platelet-type 9. Antibodies against this protein are found in several immune disorders, including neonatal alloimmune thrombocytopenia. This gene is located adjacent to a related alpha subunit gene. Alternative splicing results in multiple transcript variants.

Recommended Dilutions

WB	1:500 - 1:1000
IHC-P	1:50 - 1:200
IF/ICC	1:50 - 1:200

Immunogen Information

Gene ID

3673

Swiss Prot

P17301

Immunogen

A synthetic peptide corresponding to a sequence within amino acids 30-162 of human Integrin alpha 2 (ITGA2/CD49b) (NP_002194.2).

Synonyms

BR; GPIa; CD49B; HPA-5; VLA-2; VLAA2; b)

Contact



www.abclonal.com

Product Information

Source

Rabbit

Isotype

IgG

Purification

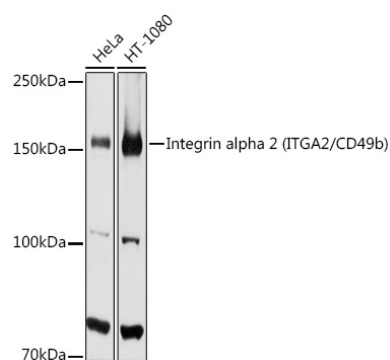
Affinity purification

Storage

Store at -20°C. Avoid freeze / thaw cycles.

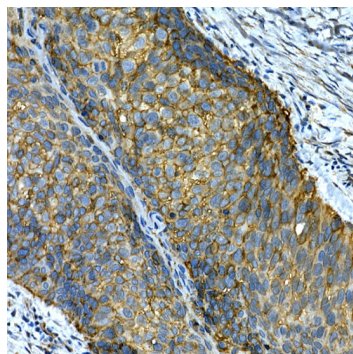
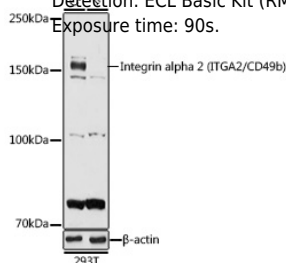
Buffer: PBS with 0.05% proclin300, 50% glycerol, pH7.3.

Validation Data

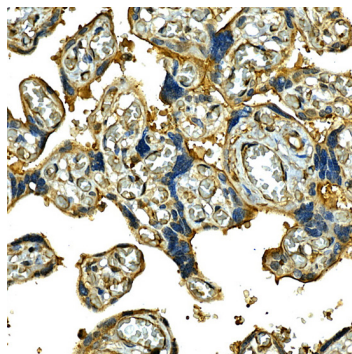


Western blot analysis of various lysates using [KO Validated] Integrin alpha 2 (ITGA2/CD49b) Rabbit pAb (A7629) at 1:1000 dilution.
Secondary antibody: HRP Goat Anti-Rabbit IgG (H+L) (AS014) at 1:10000 dilution.
Lysates/proteins: 25µg per lane.
Blocking buffer: 3% nonfat dry milk in TBST.
Detection: ECL Basic Kit (RM00020).
Exposure time: 90s.

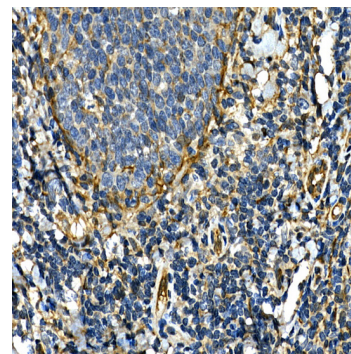
Western blot analysis of lysates from wild type (WT) and Integrin alpha 2 (ITGA2/CD49b) knockout (KO) 293T cells, using [KO Validated] Integrin alpha 2 (ITGA2/CD49b) Rabbit pAb (A7629) at 1:1000 dilution.
Secondary antibody: HRP Goat Anti-Rabbit IgG (H+L) (AS014) at 1:10000 dilution.
Lysates/proteins: 25µg per lane.
Blocking buffer: 3% nonfat dry milk in TBST.
Detection: ECL Basic Kit (RM00020).
Exposure time: 90s.



Immunohistochemistry analysis of Integrin alpha 2 (ITGA2/CD49b) in paraffin-embedded human lung cancer using [KO Validated] Integrin alpha 2 (ITGA2/CD49b) Rabbit pAb (A7629) at dilution of 1:50 (40x lens). Perform high pressure antigen retrieval with 10 mM citrate buffer pH 6.0 before commencing with IHC staining protocol.

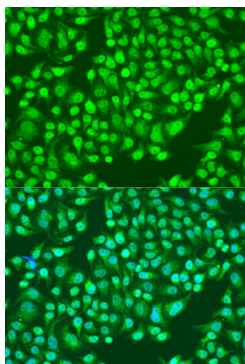


Immunohistochemistry analysis of Integrin alpha 2 (ITGA2/CD49b) in paraffin-embedded human placenta using [KO Validated] Integrin alpha 2 (ITGA2/CD49b) Rabbit pAb (A7629) at dilution of 1:50 (40x lens). Perform high pressure antigen retrieval with 10 mM citrate buffer pH 6.0 before commencing with IHC staining protocol.



Immunohistochemistry analysis of Integrin alpha 2 (ITGA2/CD49b) in paraffin-embedded human tonsil using [KO Validated] Integrin alpha 2 (ITGA2/CD49b) Rabbit pAb (A7629) at dilution of 1:50 (40x lens). Perform high pressure antigen retrieval with 10 mM citrate buffer pH 6.0 before commencing with IHC staining protocol.

Validation Data



Immunofluorescence analysis of U2OS cells using [KO Validated] Integrin alpha 2 (ITGA2/CD49b) Rabbit pAb (A7629) at dilution of 1:100. Secondary antibody: Cy3 Goat Anti-Rabbit IgG (H+L) (AS007) at 1:500 dilution. Blue: DAPI for nuclear staining.