

A7628

Leader in Biomolecular Solutions for Life Science



CENPQ Rabbit pAb

Catalog No.: A7628

Basic Information

Observed MW

31kDa

Calculated MW

31kDa

Category

Polyclonal Antibody

Applications

WB, ELISA

Cross-Reactivity

Human

Background

CENPQ is a subunit of a CENPH (MIM 605607)-CENPI (MIM 300065)-associated centromeric complex that targets CENPA (MIM 117139) to centromeres and is required for proper kinetochore function and mitotic progression (Okada et al., 2006 [PubMed 16622420]).

Recommended Dilutions

WB 1:500 - 1:2000

Immunogen Information

Gene ID

55166

Swiss Prot

Q7L2Z9

Immunogen

Recombinant fusion protein containing a sequence corresponding to amino acids 131-268 of human CENPQ (NP_060602.2).

Synonyms

CENP-Q; C6orf139; CENPQ

Contact



www.abclonal.com

Product Information

Source

Rabbit

Isotype

IgG

Purification

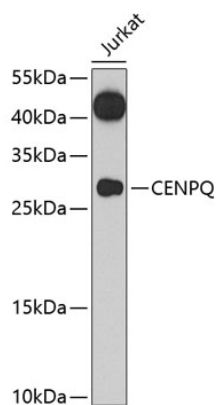
Affinity purification

Storage

Store at -20°C. Avoid freeze / thaw cycles.

Buffer: PBS with 0.02% sodium azide, 50% glycerol, pH 7.3.

Validation Data



Western blot analysis of lysates from Jurkat cells, using CENPQ Rabbit pAb (A7628) at 1:1000 dilution.
Secondary antibody: HRP Goat Anti-Rabbit IgG (H+L) (A5014) at 1:10000 dilution.
Lysates/proteins: 25µg per lane.
Blocking buffer: 3% nonfat dry milk in TBST.
Detection: ECL Basic Kit (RM00020).
Exposure time: 90s.