

SMAD2/SMAD3 Rabbit pAb

Catalog No.: A7536 **16 Publications**

Basic Information

Observed MW

60kDa

Calculated MW

48kDa/52kDa/25kDa/35kDa/43kDa

Category

Primary antibody

Applications

ELISA, WB, IHC-P, IF/ICC

Cross-Reactivity

Human, Mouse, Rat

Background

The protein encoded by this gene belongs to the SMAD, a family of proteins similar to the gene products of the Drosophila gene 'mothers against decapentaplegic' (Mad) and the C. elegans gene Sma. SMAD proteins are signal transducers and transcriptional modulators that mediate multiple signaling pathways. This protein functions as a transcriptional modulator activated by transforming growth factor-beta and is thought to play a role in the regulation of carcinogenesis.

Recommended Dilutions

WB	1:500 - 1:1000
IHC-P	1:50 - 1:200
IF/ICC	1:50 - 1:200

Immunogen Information

Gene ID

4087/4088

Swiss Prot

P84022/Q15796

Immunogen

A synthetic peptide corresponding to a sequence within amino acids 150-250 of human SMAD2/SMAD3 (NP_005892.1).

Synonyms

HSPC193; HsT17436; JV15-2; LDS1C; LDS3; MADH3; SMAD2/SMAD3

Contact

 | www.abclonal.com

Product Information

Source

Rabbit

Isotype

IgG

Purification

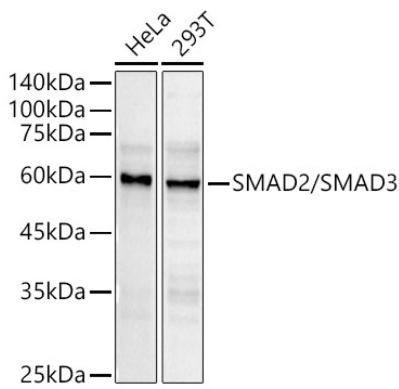
Affinity purification

Storage

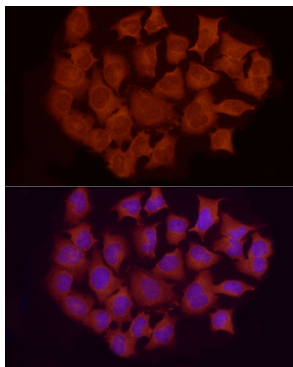
Store at -20°C. Avoid freeze / thaw cycles.

Buffer: PBS with 0.05% proclin300, 50% glycerol, pH7.3.

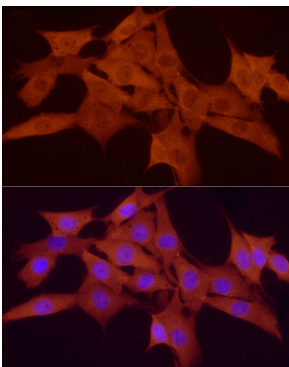
Validation Data



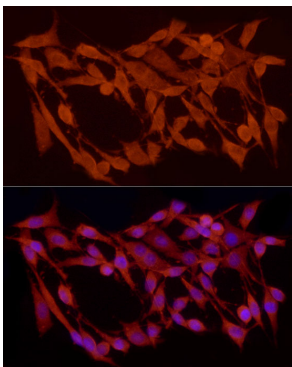
Western blot analysis of various lysates using SMAD2/SMAD3 Rabbit pAb (A7536) at 1:700 dilution.
Secondary antibody: HRP Goat Anti-Rabbit IgG (H+L) (A5014) at 1:10000 dilution.
Lysates/proteins: 25µg per lane.
Blocking buffer: 3% nonfat dry milk in TBST.
Detection: ECL Basic Kit (RM00020).
Exposure time: 90s.



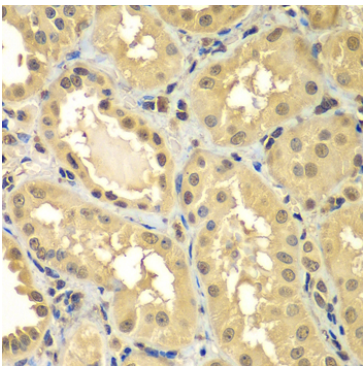
Immunofluorescence analysis of HeLa cells using SMAD2/SMAD3 Rabbit pAb (A7536) at dilution of 1:100 (40x lens). Secondary antibody: Cy3 Goat Anti-Rabbit IgG (H+L) (A5007) at 1:500 dilution. Blue: DAPI for nuclear staining.



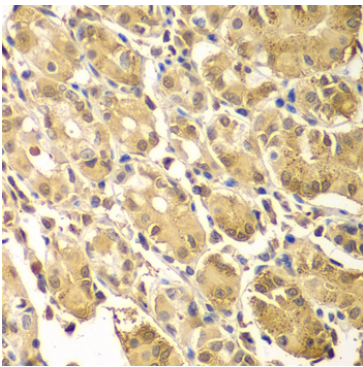
Immunofluorescence analysis of NIH/3T3 cells using SMAD2/SMAD3 Rabbit pAb (A7536) at dilution of 1:100 (40x lens). Secondary antibody: Cy3 Goat Anti-Rabbit IgG (H+L) (A5007) at 1:500 dilution. Blue: DAPI for nuclear staining.



Immunofluorescence analysis of PC-12 cells using SMAD2/SMAD3 Rabbit pAb (A7536) at dilution of 1:100 (40x lens). Secondary antibody: Cy3 Goat Anti-Rabbit IgG (H+L) (A5007) at 1:500 dilution. Blue: DAPI for nuclear staining.



Immunohistochemistry analysis of SMAD2/SMAD3 in paraffin-embedded human kidney using SMAD2/SMAD3 Rabbit pAb (A7536) at dilution of 1:100 (40x lens).Perform microwave antigen retrieval with 10 mM PBS buffer pH 7.2 before commencing with IHC staining protocol.



Immunohistochemistry analysis of SMAD2/SMAD3 in paraffin-embedded human gastric using SMAD2/SMAD3 Rabbit pAb (A7536) at dilution of 1:100 (40x lens).Perform microwave antigen retrieval with 10 mM PBS buffer pH 7.2 before commencing with IHC staining protocol.