

# Cytokeratin 16 (KRT16) Rabbit pAb

Catalog No.: A7493

## Basic Information

**Observed MW**

47kDa

**Calculated MW**

51kDa

**Category**

Primary antibody

**Applications**

ELISA, WB, IHC-P, IF/ICC

**Cross-Reactivity**

Human, Mouse, Rat

## Background

The protein encoded by this gene is a member of the keratin gene family. The keratins are intermediate filament proteins responsible for the structural integrity of epithelial cells and are subdivided into cytokeratins and hair keratins. Most of the type I cytokeratins consist of acidic proteins which are arranged in pairs of heterotypic keratin chains and are clustered in a region of chromosome 17q12-q21. This keratin has been coexpressed with keratin 14 in a number of epithelial tissues, including esophagus, tongue, and hair follicles. Mutations in this gene are associated with type 1 pachyonychia congenita, non-epidermolytic palmoplantar keratoderma and unilateral palmoplantar verrucous nevus.

## Recommended Dilutions

<b>WB</b>	1:500 - 1:2000
<b>IHC-P</b>	1:50 - 1:200
<b>IF/ICC</b>	1:50 - 1:200

## Immunogen Information

**Gene ID**

3868

**Swiss Prot**

P08779

**Immunogen**

Recombinant fusion protein containing a sequence corresponding to amino acids 190-430 of human Cytokeratin 16 (KRT16) (NP\_005548.2).

**Synonyms**

K16; PC1; CK16; K1CP; NEPPK; FNEPPK; KRT16A; Cytokeratin 16 (KRT16)

## Contact

 | [www.abclonal.com](http://www.abclonal.com)

## Product Information

**Source**

Rabbit

**Isotype**

IgG

**Purification**

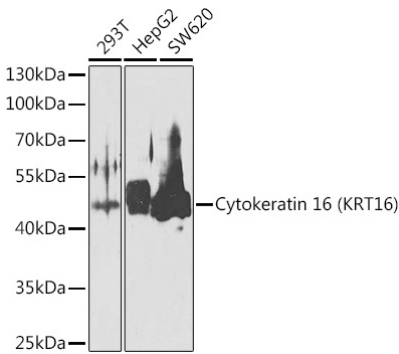
Affinity purification

**Storage**

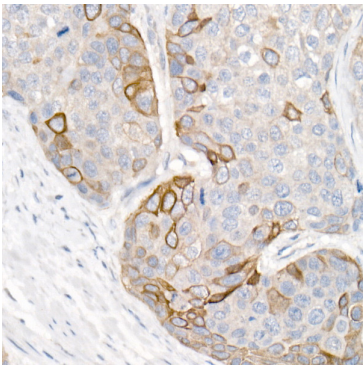
Store at -20°C. Avoid freeze / thaw cycles.

Buffer: PBS with 0.02% sodium azide, 50% glycerol, pH7.3.

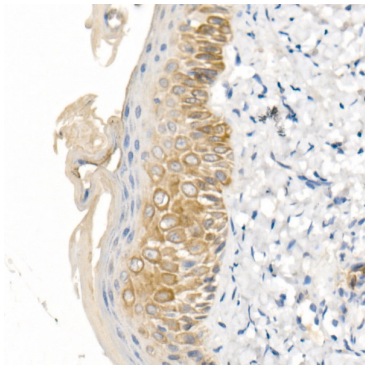
Validation Data



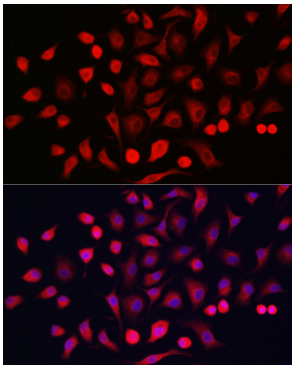
Western blot analysis of extracts of various cell lines, using Cytokeratin 16 (KRT16) antibody (A7493) at 1:1000 dilution.  
Secondary antibody: HRP Goat Anti-Rabbit IgG (H+L) (A5014) at 1:10000 dilution.  
Lysates/proteins: 25µg per lane.  
Blocking buffer: 3% nonfat dry milk in TBST.  
Detection: ECL Basic Kit (RM00020).  
Exposure time: 60s.



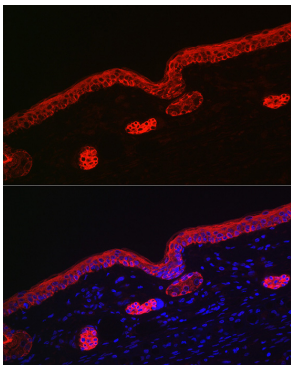
Immunohistochemistry analysis of paraffin-embedded human esophageal cancer using Cytokeratin 16 (KRT16) Rabbit pAb (A7493) at dilution of 1:100 (40x lens). Perform high pressure antigen retrieval with 10 mM citrate buffer pH 6.0 before commencing with IHC staining protocol.



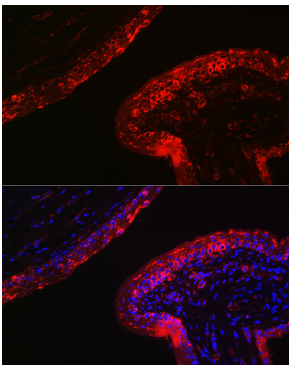
Immunohistochemistry analysis of paraffin-embedded human skin using Cytokeratin 16 (KRT16) Rabbit pAb (A7493) at dilution of 1:100 (40x lens). Perform high pressure antigen retrieval with 10 mM citrate buffer pH 6.0 before commencing with IHC staining protocol.



Immunofluorescence analysis of A-549 cells using Cytokeratin 16 (KRT16) Rabbit pAb (A7493) at dilution of 1:200 (40x lens). Blue: DAPI for nuclear staining.



Immunofluorescence analysis of rat skin using Cytokeratin 16 (KRT16) Rabbit pAb (A7493) at dilution of 1:200 (40x lens). Blue: DAPI for nuclear staining.



Immunofluorescence analysis of mouse skin using Cytokeratin 16 (KRT16) Rabbit pAb (A7493) at dilution of 1:200 (40x lens). Blue: DAPI for nuclear staining.