

A7488

Leader in Biomolecular Solutions for Life Science



Fibronectin Rabbit pAb

Catalog No.: A7488

7 Publications

Basic Information

Observed MW

290kDa

Calculated MW

272kDa

Category

Mouse Monoclonal Antibody

Applications

WB, ELISA

Cross-Reactivity

Human, Mouse, Rat

Background

This gene encodes fibronectin, a glycoprotein present in a soluble dimeric form in plasma, and in a dimeric or multimeric form at the cell surface and in extracellular matrix. The encoded preproprotein is proteolytically processed to generate the mature protein. Fibronectin is involved in cell adhesion and migration processes including embryogenesis, wound healing, blood coagulation, host defense, and metastasis. The gene has three regions subject to alternative splicing, with the potential to produce 20 different transcript variants, at least one of which encodes an isoform that undergoes proteolytic processing. The full-length nature of some variants has not been determined.

Recommended Dilutions

WB 1:500 - 1:2000

Immunogen Information

Gene ID

2335

Swiss Prot

P02751

Immunogen

Recombinant fusion protein containing a sequence corresponding to amino acids 1-128 of human Fibronectin (NP_002017.1).

Synonyms

FN; CIG; FNZ; MSF; ED-B; FINC; GFND; LETS; GFND2; SMDCF; Fibronectin

Contact



www.abclonal.com

Product Information

Source

Rabbit

Isotype

IgG

Purification

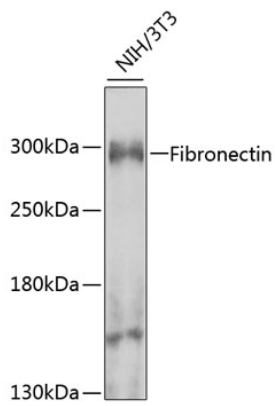
Affinity purification

Storage

Store at -20°C. Avoid freeze / thaw cycles.

Buffer: PBS with 0.02% sodium azide, 50% glycerol, pH 7.3.

Validation Data



Western blot analysis of lysates from NIH/3T3 cells, using Fibronectin Rabbit pAb (A7488) at 1:1000 dilution.

Secondary antibody: HRP Goat Anti-Rabbit IgG (H+L) (AS014) at 1:10000 dilution.

Lysates/proteins: 25µg per lane.

Blocking buffer: 3% nonfat dry milk in TBST.

Detection: ECL Enhanced Kit (RM00021).

Exposure time: 90s.