

A7432

Leader in Biomolecular Solutions for Life Science



GSDME Rabbit pAb

Catalog No.: A7432

13 Publications

Basic Information

Observed MW

30kDa

Calculated MW

55kDa

Category

Polyclonal Antibody

Applications

WB, IHC-P, IF/ICC, ELISA

Cross-Reactivity

Human, Mouse, Rat

Background

Hearing impairment is a heterogeneous condition with over 40 loci described. The protein encoded by this gene is expressed in fetal cochlea, however, its function is not known. Nonsyndromic hearing impairment is associated with a mutation in this gene. Three transcript variants encoding two different isoforms have been found for this gene.

Recommended Dilutions

WB	1:500 - 1:1000
IHC-P	1:50 - 1:200
IF/ICC	1:50 - 1:100

Immunogen Information

Gene ID

1687

Swiss Prot

O60443

Immunogen

A synthetic peptide corresponding to a sequence within amino acids 1-270 of human GSDME (NP_004394.1).

Synonyms

DFNA5; ICERE-1; GSDME

Contact



www.abclonal.com

Product Information

Source

Rabbit

Isotype

IgG

Purification

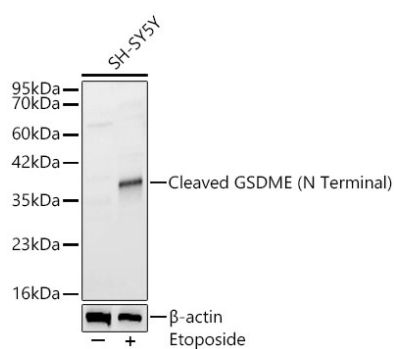
Affinity purification

Storage

Store at -20°C. Avoid freeze / thaw cycles.

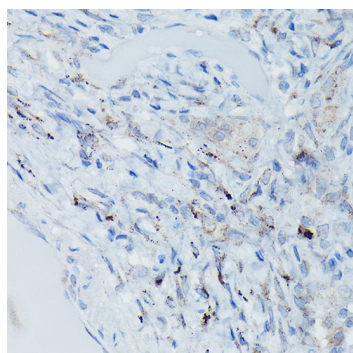
Buffer: PBS with 0.05% proclin300, 50% glycerol, pH7.3.

Validation Data

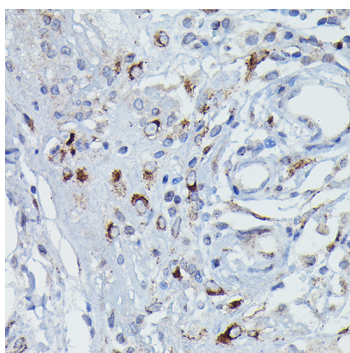


Western blot analysis of lysates from SH-SY5Y cells using GSDME Rabbit pAb (A7432) at 1:1000 dilution. SH-SY5Y cells were treated by Etoposide.
 Secondary antibody: HRP Goat Anti-Rabbit IgG (H+L) (AS014) at 1:10000 dilution.
 Lysates/proteins: 25 µg per lane.
 Blocking buffer: 3% nonfat dry milk in TBST.
 Detection: ECL Enhanced Kit (RM00021).
 Exposure time: 180s.

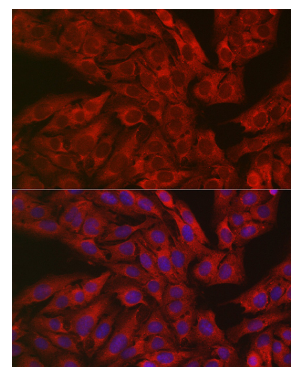
WB samples for antibody validation are kindly provided by Dr. Feng Shao, NIBS



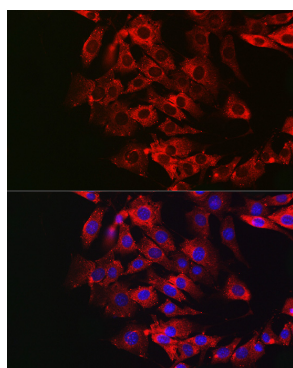
Immunohistochemistry analysis of GSDME in paraffin-embedded Human pulmonary tuberculosis using GSDME Rabbit pAb (A7432) at dilution of 1:50 (40x lens). Perform high pressure antigen retrieval with 10 mM citrate buffer pH 6.0 before commencing with IHC staining protocol.



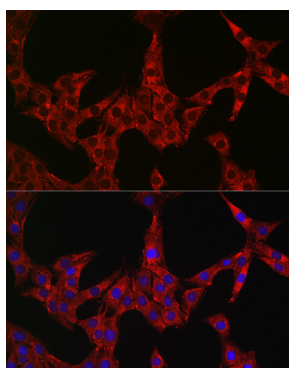
Immunohistochemistry analysis of GSDME in paraffin-embedded Human pancreatic panniculitis using GSDME Rabbit pAb (A7432) at dilution of 1:50 (40x lens). Perform high pressure antigen retrieval with 10 mM citrate buffer pH 6.0 before commencing with IHC staining protocol.



Immunofluorescence analysis of U2OS cells using GSDME Rabbit pAb (A7432) at dilution of 1:50. Secondary antibody: Cy3 Goat Anti-Rabbit IgG (H+L) (AS007) at 1:500 dilution. Blue: DAPI for nuclear staining.



Immunofluorescence analysis of NIH/3T3 cells using GSDME Rabbit pAb (A7432) at dilution of 1:50. Secondary antibody: Cy3 Goat Anti-Rabbit IgG (H+L) (AS007) at 1:500 dilution. Blue: DAPI for nuclear staining.



Immunofluorescence analysis of PC-12 cells using GSDME Rabbit pAb (A7432) at dilution of 1:50. Secondary antibody: Cy3 Goat Anti-Rabbit IgG (H+L) (AS007) at 1:500 dilution. Blue: DAPI for nuclear staining.