

A7321

Leader in Biomolecular Solutions for Life Science



## BMP15 Rabbit pAb

Catalog No.: A7321

3 Publications

### Basic Information

#### Observed MW

45-50kDa

#### Calculated MW

45kDa

#### Category

Polyclonal Antibody

#### Applications

WB,IF/ICC,ELISA

#### Cross-Reactivity

Human,Mouse,Rat

### Background

This gene encodes a secreted ligand of the TGF-beta (transforming growth factor-beta) superfamily of proteins. Ligands of this family bind various TGF-beta receptors leading to recruitment and activation of SMAD family transcription factors that regulate gene expression. The encoded preproprotein is proteolytically processed to generate subunits of a disulfide-linked homodimer, or alternatively, a heterodimer, with the related protein, growth differentiation factor 9 (GDF9). This protein plays a role in oocyte maturation and follicular development, through activation of granulosa cells. Defects in this gene are the cause of ovarian dysgenesis and are associated with premature ovarian failure.

### Recommended Dilutions

WB	1:500 - 1:2000
IF/ICC	1:50 - 1:100

### Immunogen Information

#### Gene ID

9210

#### Swiss Prot

O95972

#### Immunogen

Recombinant fusion protein containing a sequence corresponding to amino acids 143-392 of human BMP15 (NP\_005439.2).

#### Synonyms

ODG2; POF4; GDF9B; BMP15

### Contact



[www.abclonal.com](http://www.abclonal.com)

### Product Information

#### Source

Rabbit

#### Isotype

IgG

#### Purification

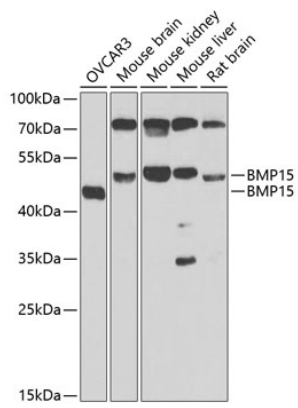
Affinity purification

#### Storage

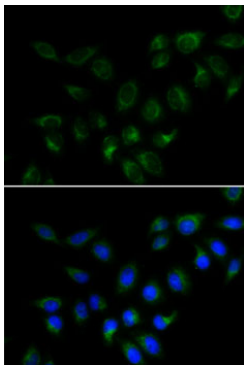
Store at -20°C. Avoid freeze / thaw cycles.

Buffer: PBS with 0.02% sodium azide,50% glycerol,pH7.3.

## Validation Data



Western blot analysis of various lysates using BMP15 Rabbit pAb (A7321) at 1:1000 dilution. Secondary antibody: HRP Goat Anti-Rabbit IgG (H+L) (A5014) at 1:10000 dilution. Lysates/proteins: 25µg per lane. Blocking buffer: 3% nonfat dry milk in TBST. Detection: ECL Enhanced Kit (RM00021). Exposure time: 30s.



Immunofluorescence analysis of MCF7 cells using BMP15 Rabbit pAb (A7321). Secondary antibody: Cy3 Goat Anti-Rabbit IgG (H+L) (A5007) at 1:500 dilution. Blue: DAPI for nuclear staining.