

A7320

Leader in Biomolecular Solutions for Life Science



Kallistatin (SERPINA4) Rabbit pAb

Catalog No.: A7320

Basic Information

Observed MW

49kDa

Calculated MW

49kDa

Category

Polyclonal Antibody

Applications

WB,IF/ICC,ELISA

Cross-Reactivity

Human,Mouse,Rat

Background

Predicted to enable serine-type endopeptidase inhibitor activity. Predicted to be involved in negative regulation of endopeptidase activity. Located in extracellular exosome. Biomarker of diabetic retinopathy.

Recommended Dilutions

WB	1:100 - 1:500
IF/ICC	1:50 - 1:100

Immunogen Information

Gene ID

5267

Swiss Prot

P29622

Immunogen

Recombinant fusion protein containing a sequence corresponding to amino acids 178-427 of human Kallistatin (SERPINA4) (NP_006206.2).

Synonyms

KAL; KST; PI4; KLST; PI-4; kallistatin; Kallistatin (SERPINA4)

Contact



www.abclonal.com

Product Information

Source

Rabbit

Isotype

IgG

Purification

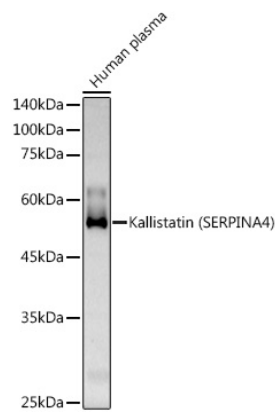
Affinity purification

Storage

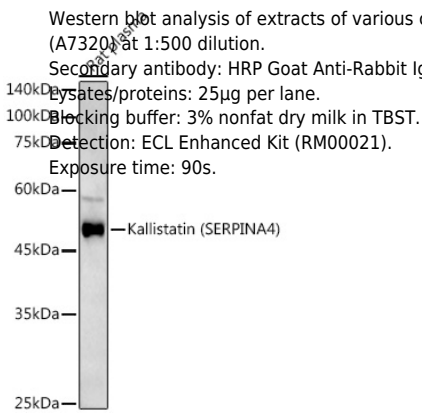
Store at -20°C. Avoid freeze / thaw cycles.

Buffer: PBS with 0.02% sodium azide,50% glycerol,pH7.3.

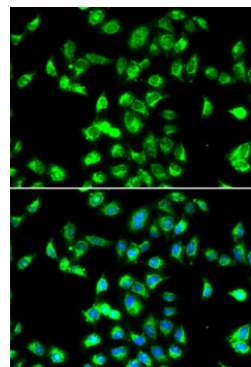
Validation Data



Western blot analysis of extracts of Human plasma, using Kallistatin (SERPINA4) Rabbit pAb antibody (A7320) at 1:500 dilution.
Secondary antibody: HRP Goat Anti-Rabbit IgG (H+L) (AS014) at 1:10000 dilution.
Lysates/proteins: 25µg per lane.
Blocking buffer: 3% nonfat dry milk in TBST.
Detection: ECL Basic Kit (RM00020).
Exposure time: 180s.



Western blot analysis of extracts of various cell lines, using Kallistatin (SERPINA4) Rabbit pAb antibody (A7320) at 1:500 dilution.
Secondary antibody: HRP Goat Anti-Rabbit IgG (H+L) (AS014) at 1:10000 dilution.
Lysates/proteins: 25µg per lane.
Blocking buffer: 3% nonfat dry milk in TBST.
Detection: ECL Enhanced Kit (RM00021).
Exposure time: 90s.



Immunofluorescence analysis of MCF7 cells using Kallistatin (SERPINA4) antibody (A7320). Blue: DAPI for nuclear staining.