

A7292

Leader in Biomolecular Solutions for Life Science



## NAT10 Rabbit pAb

Catalog No.: A7292

### Basic Information

**Observed MW**

116kDa

**Calculated MW**

116kDa

**Category**

Polyclonal Antibody

**Applications**

WB,IF/ICC,ELISA

**Cross-Reactivity**

Human,Rat

### Background

The protein encoded by this gene is an RNA cytidine acetyltransferase involved in histone acetylation, tRNA acetylation, the biosynthesis of 18S rRNA, and the enhancement of nuclear architecture and chromatin organization.

### Recommended Dilutions

<b>WB</b>	1:500 - 1:2000
<b>IF/ICC</b>	1:50 - 1:100

### Immunogen Information

**Gene ID**

55226

**Swiss Prot**

Q9H0A0

**Immunogen**

Recombinant fusion protein containing a sequence corresponding to amino acids 1-250 of human NAT10 (NP\_078938.2).

**Synonyms**

ALP; Kre33; NET43; NAT10

### Contact



[www.abclonal.com](http://www.abclonal.com)

### Product Information

**Source**

Rabbit

**Isotype**

IgG

**Purification**

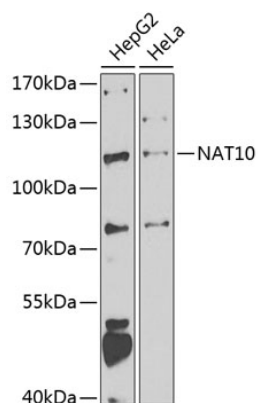
Affinity purification

**Storage**

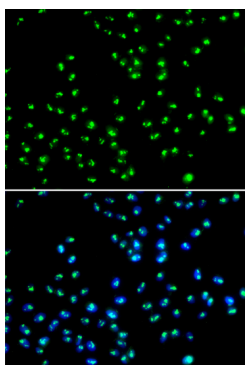
Store at -20°C. Avoid freeze / thaw cycles.

Buffer: PBS with 0.01% thimerosal, 50% glycerol, pH 7.3.

## Validation Data



Western blot analysis of extracts of various cell lines, using NAT10 antibody (A7292) at 1:1000 dilution. Secondary antibody: HRP Goat Anti-Rabbit IgG (H+L) (AS014) at 1:10000 dilution. Lysates/proteins: 25µg per lane. Blocking buffer: 3% nonfat dry milk in TBST. Detection: ECL Enhanced Kit (RM00021). Exposure time: 90s.



Immunofluorescence analysis of MCF-7 cells using NAT10 antibody (A7292). Blue: DAPI for nuclear staining.