

Acetyl-Histone H4-K8 pAb

| | | | |
|-------------------------|---------------------------------------|----------------------|-----------------------|
| Catalog No. | A7258 | Category | Acetylated Antibodies |
| Applications | WB, IHC, IF, IP, ChIP, ChIPseq | Observed MW | 11kDa |
| Cross-reactivity | Human, Mouse, Rat, Other (Wide Range) | Calculated MW | 11kDa |

Immunogen Information

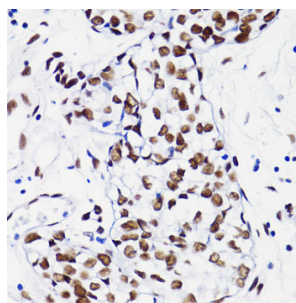
| | |
|-------------------|---|
| Immunogen | A synthetic peptide of human Acetyl-Histone H4-K8 |
| Gene ID | 8370 |
| Swiss prot | P62805 |
| Synonyms | FO108;H4;H4/n;H4F2;H4FN;HIST2H4 |

Product information

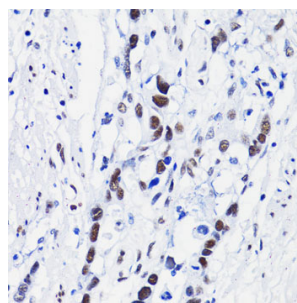
| | |
|----------------------------|--|
| Source | Rabbit |
| Isotype | IgG |
| Purification method | Affinity purification |
| Storage | Store at -20°C. Avoid freeze / thaw cycles. Buffer: PBS with 0.02% sodium azide, 50% glycerol, pH7.3. |

Background

Histones are basic nuclear proteins that are responsible for the nucleosome structure of the chromosomal fiber in eukaryotes. This structure consists of approximately 146 bp of DNA wrapped around a nucleosome, an octamer composed of pairs of each of the four core histones (H2A, H2B, H3, and H4). The chromatin fiber is further compacted through the interaction of a linker histone, H1, with the DNA between the nucleosomes to form higher order chromatin structures. This gene is intronless and encodes a replication-dependent histone that is a member of the histone H4 family. Transcripts from this gene lack polyA tails; instead, they contain a palindromic termination element. This gene is found in a histone cluster on chromosome 1. This gene is one of four histone genes in the cluster that are duplicated; this record represents the centromeric copy.



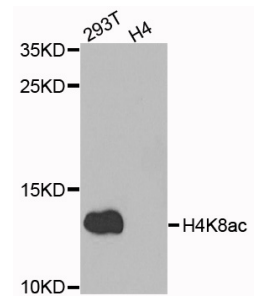
Immunohistochemistry of paraffin-embedded human breast using H4K8ac antibody (A7258) at dilution of 1:100 (40x lens).



Immunohistochemistry of paraffin-embedded human gastric cancer using H4K8ac antibody (A7258) at dilution of 1:100 (40x lens).

Recommended Dilutions

| |
|------------------------|
| WB 1:1000 - 1:3000 |
| IHC 1:200 - 1:500 |
| IF 1:500 - 1:1000 |
| IP 1:200 - 1:500 |
| CHIP 1:20 - 1:50 |
| CHIPseq 1:20 - 1:50 |

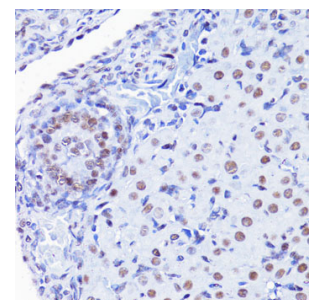


Western blot analysis of extracts of various cell lines, using Acetyl-Histone H4-K8 antibody (A7258) at 1:1000 dilution.

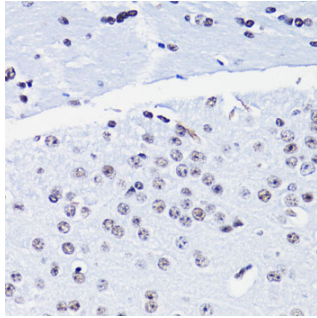
Secondary antibody: HRP Goat Anti-Rabbit IgG (H+L) (AS014) at 1:10000 dilution.

Lysates/proteins: 25ug per lane.
Blocking buffer: 3% nonfat dry milk in TBST.

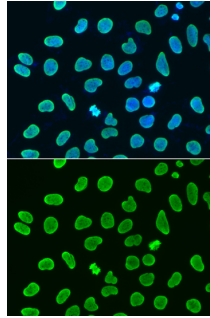
Detection: ECL Enhanced Kit (RM00021).
Exposure time: 90s.



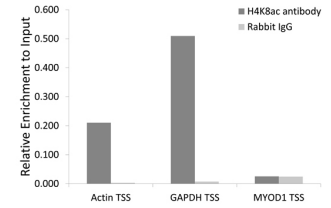
Immunohistochemistry of paraffin-embedded rat ovary using H4K8ac antibody (A7258) at dilution of 1:100 (40x lens).



Immunohistochemistry of paraffin-embedded mouse brain using H4K8ac antibody (A7258) at dilution of 1:100 (40x lens).



Immunofluorescence analysis of HeLa cells using Acetyl-Histone H4-K8 antibody (A7258). Blue: DAPI for nuclear staining.



Chromatin immunoprecipitation analysis extracts of 293 cell line, using H4K8ac antibody (A7258) and rabbit IgG. The amount of immunoprecipitated DNA was checked by quantitative PCR. Histogram was constructed by the ratios of the immunoprecipitated DNA to the input.