

alpha smooth muscle actin Rabbit pAb

Catalog No.	A7248	Category	Polyclonal Antibodies
Applications	WB, IF	Observed MW	42kDa
Cross-reactivity	Human, Mouse, Rat	Calculated MW	42kDa

Immunogen Information

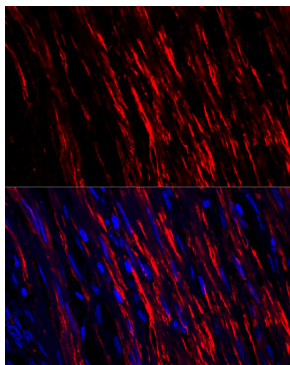
Immunogen	Recombinant fusion protein containing a sequence corresponding to amino acids 1-377 of human alpha smooth muscle actin (NP_001135417.1).
Gene ID	59
Swiss prot	P62736
Synonyms	AAT6;ACTSA;MYMY5;ACTA2;actin

Product information

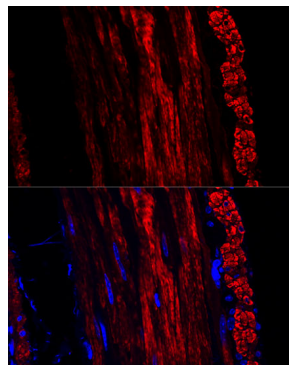
Source	Rabbit
Isotype	IgG
Purification method	Affinity purification
Storage	Store at -20°C. Avoid freeze / thaw cycles. Buffer: PBS with 0.02% sodium azide, 50% glycerol, pH7.3.

Background

The protein encoded by this gene belongs to the actin family of proteins, which are highly conserved proteins that play a role in cell motility, structure and integrity. Alpha, beta and gamma actin isoforms have been identified, with alpha actins being a major constituent of the contractile apparatus, while beta and gamma actins are involved in the regulation of cell motility. This actin is an alpha actin that is found in skeletal muscle. Defects in this gene cause aortic aneurysm familial thoracic type 6. Multiple alternatively spliced variants, encoding the same protein, have been identified.



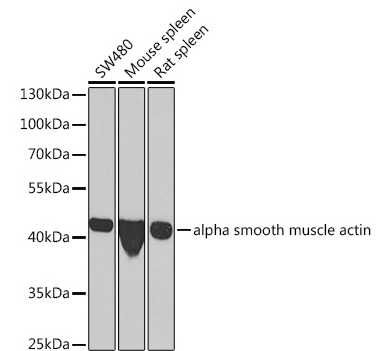
Confocal immunofluorescence analysis of human colon carcinoma using alpha smooth muscle actin Polyclonal Antibody (A7248) at dilution of 1:100. Blue: DAPI for nuclear staining.



Confocal immunofluorescence analysis of mouse colon using alpha smooth muscle actin Polyclonal Antibody (A7248) at dilution of 1:100. Blue: DAPI for nuclear staining.

Recommended Dilutions

WB	1:500 - 1:2000
IF	1:50 - 1:200



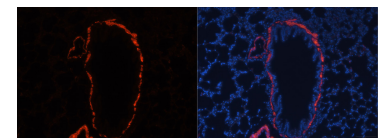
Western blot analysis of extracts of various cell lines, using alpha smooth muscle actin antibody (A7248) at 1:1000 dilution.

Secondary antibody: HRP Goat Anti-Rabbit IgG (H+L) (AS014) at 1:10000 dilution.

Lysates/proteins: 25ug per lane.
Blocking buffer: 3% nonfat dry milk in TBST.

Detection: ECL Enhanced Kit (RM00021).

Exposure time: 60s.



Immunofluorescence analysis of rat lung using alpha smooth muscle actin antibody (A7248). Blue: DAPI for nuclear staining.