

A7238

Leader in Biomolecular Solutions for Life Science



KDM5A Rabbit pAb

Catalog No.: A7238

1 Publications

Basic Information

Observed MW

192kDa

Calculated MW

192kDa

Category

Mouse Monoclonal Antibody

Applications

WB,IP,ChIP,ELISA

Cross-Reactivity

Human,Rat

Background

This gene encodes a member of the Jumonji, AT-rich interactive domain 1 (JARID1) histone demethylase protein family. The encoded protein plays a role in gene regulation through the histone code by specifically demethylating lysine 4 of histone H3. The encoded protein interacts with many other proteins, including retinoblastoma protein, and is implicated in the transcriptional regulation of Hox genes and cytokines. This gene may play a role in tumor progression.

Recommended Dilutions

WB 1:500 - 1:2000

IP 0.5µg-4µg antibody for
200µg-400µg extracts of
whole cells

ChIP 5µg antibody for
10µg-15µg of Chromatin

Immunogen Information

Gene ID

5927

Swiss Prot

P29375

Immunogen

Recombinant protein of human KDM5A

Synonyms

RBP2; RBBP2; RBBP-2; KDM5A

Contact



www.abclonal.com

Product Information

Source

Rabbit

Isotype

IgG

Purification

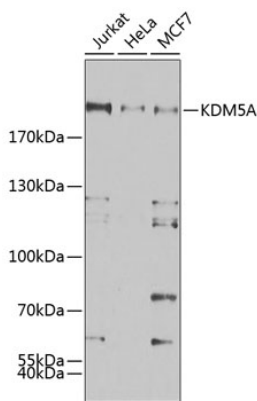
Affinity purification

Storage

Store at -20°C. Avoid freeze / thaw cycles.

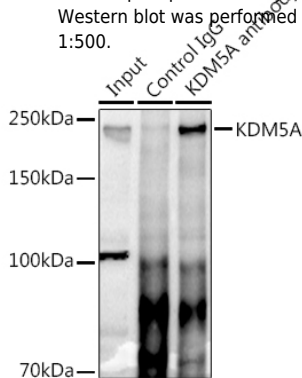
Buffer: PBS with 0.02% sodium azide,50% glycerol,pH7.3.

Validation Data



Western blot analysis of various lysates using KDM5A Rabbit pAb (A7238) at 1:500 dilution. Secondary antibody: HRP Goat Anti-Rabbit IgG (H+L) (A5014) at 1:10000 dilution. Lysates/proteins: 25µg per lane. Blocking buffer: 3% nonfat dry milk in TBST. Detection: ECL Enhanced Kit (RM00021). Exposure time: 60s.

Immunoprecipitation analysis of 300 µg extracts of HeLa cells using 3 µg KDM5A antibody (A7238). Western blot was performed from the immunoprecipitate using KDM5A antibody (A7238) at a dilution of 1:500.



Chromatin immunoprecipitation analysis of extracts of HCT116 cells, using KDM5A antibody (A7238) and rabbit IgG. The amount of immunoprecipitated DNA was checked by quantitative PCR. Histogram was constructed by the ratios of the immunoprecipitated DNA to the input.

