

A7234

Leader in Biomolecular Solutions for Life Science



ITLN1 Rabbit pAb

Catalog No.: A7234

1 Publications

Basic Information

Observed MW

37kDa

Calculated MW

36kDa

Category

Mouse Monoclonal Antibody

Applications

WB, IHC-P, IF/ICC, ELISA

Cross-Reactivity

Mouse, Rat

Background

Enables calcium ion binding activity; identical protein binding activity; and oligosaccharide binding activity. Involved in positive regulation of glucose import; positive regulation of protein phosphorylation; and protein homotrimerization. Located in extracellular exosome. Part of receptor complex.

Recommended Dilutions

WB	1:500 - 1:2000
IHC-P	1:50 - 1:200
IF/ICC	1:50 - 1:200

Immunogen Information

Gene ID

55600

Swiss Prot

Q8WWA0

Immunogen

Recombinant fusion protein containing a sequence corresponding to amino acids 19-313 of human ITLN1 (NP_060095.2).

Synonyms

HL1; LFR; HL-1; INTL; ITLN; hIntL; omentin; ITLN1

Contact



www.abclonal.com

Product Information

Source

Rabbit

Isotype

IgG

Purification

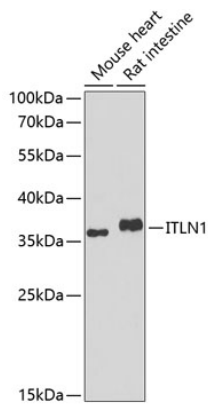
Affinity purification

Storage

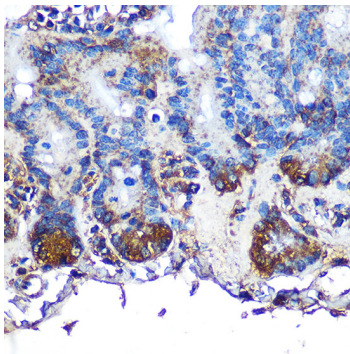
Store at -20°C. Avoid freeze / thaw cycles.

Buffer: PBS with 0.02% sodium azide, 50% glycerol, pH 7.3.

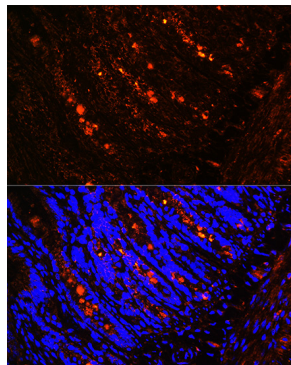
Validation Data



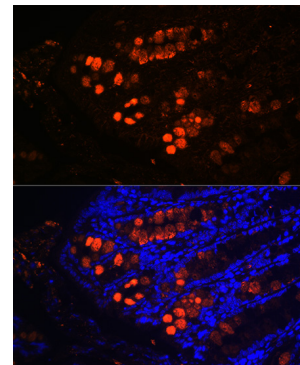
Western blot analysis of extracts of various cell lines, using ITLN1 antibody (A7234) at 1:1000 dilution.
Secondary antibody: HRP Goat Anti-Rabbit IgG (H+L) (A5014) at 1:10000 dilution.
Lysates/proteins: 25µg per lane.
Blocking buffer: 3% nonfat dry milk in TBST.
Detection: ECL Basic Kit (RM00020).
Exposure time: 90s.



Immunohistochemistry analysis of paraffin-embedded mouse intestine using ITLN1 Rabbit pAb (A7234) at dilution of 1:100 (40x lens). Perform microwave antigen retrieval with 10 mM PBS buffer pH 7.2 before commencing with IHC staining protocol.



Immunofluorescence analysis of rat intestine using ITLN1 Rabbit pAb (A7234) at dilution of 1:100 (40x lens). Blue: DAPI for nuclear staining.



Immunofluorescence analysis of mouse colon using ITLN1 Rabbit pAb (A7234) at dilution of 1:100 (40x lens). Blue: DAPI for nuclear staining.