

A7034

Leader in Biomolecular Solutions for Life Science



## DDX21 Rabbit pAb

Catalog No.: A7034

4 Publications

### Basic Information

#### Observed MW

100kDa

#### Calculated MW

87kDa

#### Category

Polyclonal Antibody

#### Applications

WB, ELISA

#### Cross-Reactivity

Human, Mouse

### Background

DEAD box proteins, characterized by the conserved motif Asp-Glu-Ala-Asp (DEAD), are putative RNA helicases. They are implicated in a number of cellular processes involving alteration of RNA secondary structure such as translation initiation, nuclear and mitochondrial splicing, and ribosome and spliceosome assembly. Based on their distribution patterns, some members of this family are believed to be involved in embryogenesis, spermatogenesis, and cellular growth and division. This gene encodes a DEAD box protein, which is an antigen recognized by autoimmune antibodies from a patient with watermelon stomach disease. This protein unwinds double-stranded RNA, folds single-stranded RNA, and may play important roles in ribosomal RNA biogenesis, RNA editing, RNA transport, and general transcription.

### Recommended Dilutions

WB 1:500 - 1:2000

### Immunogen Information

#### Gene ID

9188

#### Swiss Prot

Q9NR30

#### Immunogen

Recombinant fusion protein containing a sequence corresponding to amino acids 624-783 of human DDX21 (NP\_004719.2).

#### Synonyms

RH; GUA; GURDB; II/Gu; RH II/Gu; RH-II/GU; gu-alpha; RH-II/GuA; DDX21

### Contact



[www.abclonal.com](http://www.abclonal.com)

### Product Information

#### Source

Rabbit

#### Isotype

IgG

#### Purification

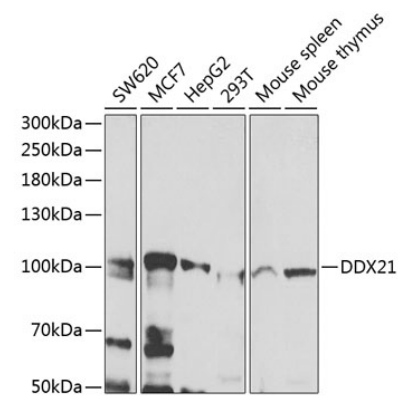
Affinity purification

#### Storage

Store at -20°C. Avoid freeze / thaw cycles.

Buffer: PBS with 0.02% sodium azide, 50% glycerol, pH 7.3.

Validation Data



Western blot analysis of extracts of various cell lines, using DDX21 antibody (A7034) at 1:1000 dilution. Secondary antibody: HRP Goat Anti-Rabbit IgG (H+L) (AS014) at 1:10000 dilution. Lysates/proteins: 25µg per lane. Blocking buffer: 3% nonfat dry milk in TBST. Detection: ECL Enhanced Kit (RM00021). Exposure time: 60s.