

A7016

Leader in Biomolecular Solutions for Life Science



## LIPF Rabbit pAb

Catalog No.: A7016

### Basic Information

**Observed MW**

45kDa

**Calculated MW**

45kDa

**Category**

Polyclonal Antibody

**Applications**

WB, ELISA

**Cross-Reactivity**

Human, Mouse, Rat

### Background

This gene encodes gastric lipase, an enzyme involved in the digestion of dietary triglycerides in the gastrointestinal tract, and responsible for 30% of fat digestion processes occurring in human. It is secreted by gastric chief cells in the fundic mucosa of the stomach, and it hydrolyzes the ester bonds of triglycerides under acidic pH conditions. The gene is a member of a conserved gene family of lipases that play distinct roles in neutral lipid metabolism. Several transcript variants encoding different isoforms have been found for this gene.

### Recommended Dilutions

WB 1:500 - 1:2000

### Immunogen Information

**Gene ID**

8513

**Swiss Prot**

P07098

**Immunogen**

Recombinant fusion protein containing a sequence corresponding to amino acids 219-398 of human LIPF (NP\_004181.1).

**Synonyms**

GL; HGL; HLAL; LIPF

### Contact



[www.abclonal.com](http://www.abclonal.com)

### Product Information

**Source**

Rabbit

**Isotype**

IgG

**Purification**

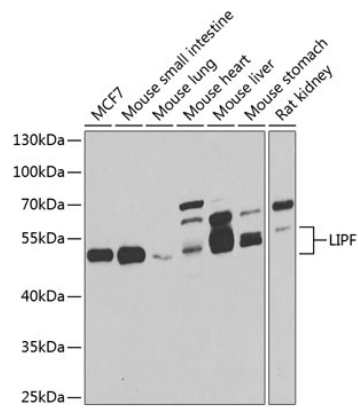
Affinity purification

**Storage**

Store at -20°C. Avoid freeze / thaw cycles.

Buffer: PBS with 0.02% sodium azide, 50% glycerol, pH 7.3.

Validation Data



Western blot analysis of extracts of various cell lines, using LIPF antibody (A7016) at 1:1000 dilution.  
Secondary antibody: HRP Goat Anti-Rabbit IgG (H+L) (A5014) at 1:10000 dilution.  
Lysates/proteins: 25µg per lane.  
Blocking buffer: 3% nonfat dry milk in TBST.  
Detection: ECL Basic Kit (RM00020).  
Exposure time: 10s.