

A7004

Leader in Biomolecular Solutions for Life Science



## SEMA3B Rabbit pAb

Catalog No.: A7004

1 Publications

### Basic Information

#### Observed MW

83kDa

#### Calculated MW

83kDa

#### Category

Polyclonal Antibody

#### Applications

WB, ELISA

#### Cross-Reactivity

Human, Mouse

### Background

The protein encoded by this gene belongs to the class-3 semaphorin/collapsin family, whose members function in growth cone guidance during neuronal development. This family member inhibits axonal extension and has been shown to act as a tumor suppressor by inducing apoptosis. Alternative splicing of this gene results in multiple transcript variants.

### Recommended Dilutions

WB 1:500 - 1:2000

### Immunogen Information

#### Gene ID

7869

#### Swiss Prot

Q13214

#### Immunogen

Recombinant fusion protein containing a sequence corresponding to amino acids 569-748 of human SEMA3B (NP\_001005914.1).

#### Synonyms

SemaA; SEMA5; SEMAA; semaV; LUCA-1; SEMA3B

### Contact



[www.abclonal.com](http://www.abclonal.com)

### Product Information

#### Source

Rabbit

#### Isotype

IgG

#### Purification

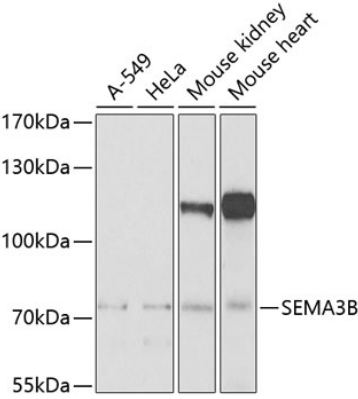
Affinity purification

#### Storage

Store at -20°C. Avoid freeze / thaw cycles.

Buffer: PBS with 0.02% sodium azide, 50% glycerol, pH 7.3.

Validation Data



Western blot analysis of extracts of various cell lines, using SEMA3B Antibody (A7004) at 1:1000 dilution. Secondary antibody: HRP Goat Anti-Rabbit IgG (H+L) (AS014) at 1:10000 dilution. Lysates/proteins: 25µg per lane. Blocking buffer: 3% nonfat dry milk in TBST. Detection: ECL Basic Kit (RM00020). Exposure time: 90s.