

A6982

Leader in Biomolecular Solutions for Life Science



## GLUT1/SLC2A1 Rabbit pAb

Catalog No.: A6982

25 Publications

### Basic Information

#### Observed MW

60kDa

#### Calculated MW

54kDa

#### Category

Mouse Monoclonal Antibody

#### Applications

WB, IHC-P, ELISA

#### Cross-Reactivity

Human, Mouse, Rat

### Background

This gene encodes a major glucose transporter in the mammalian blood-brain barrier. The encoded protein is found primarily in the cell membrane and on the cell surface, where it can also function as a receptor for human T-cell leukemia virus (HTLV) I and II. Mutations in this gene have been found in a family with paroxysmal exertion-induced dyskinesia.

### Recommended Dilutions

WB 1:1000 - 1:5000

IHC-P 1:50 - 1:200

### Immunogen Information

#### Gene ID

6513

#### Swiss Prot

P11166

#### Immunogen

A synthetic peptide corresponding to a sequence within amino acids 210-310 of human GLUT1/SLC2A1 (NP\_006507.2).

#### Synonyms

CSE; PED; DYT9; GLUT; DYT17; DYT18; EIG12; GLUT1; HTLVR; GLUT-1; SDCHCN; GLUT1DS; GLUT1/SLC2A1

### Contact



[www.abclonal.com](http://www.abclonal.com)

### Product Information

#### Source

Rabbit

#### Isotype

IgG

#### Purification

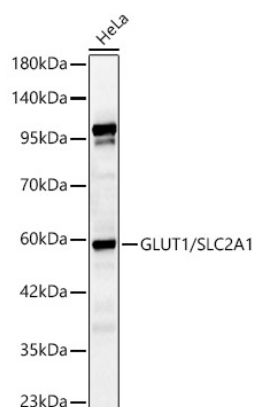
Affinity purification

#### Storage

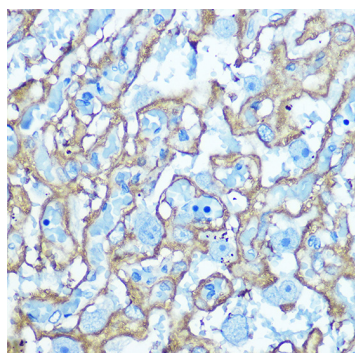
Store at -20°C. Avoid freeze / thaw cycles.

Buffer: PBS with 0.01% thimerosal, 50% glycerol, pH 7.3.

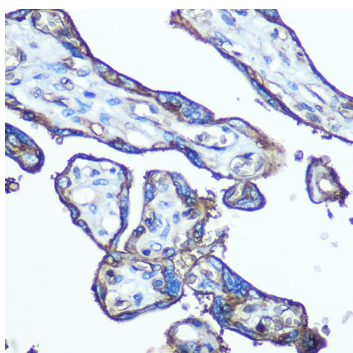
## Validation Data



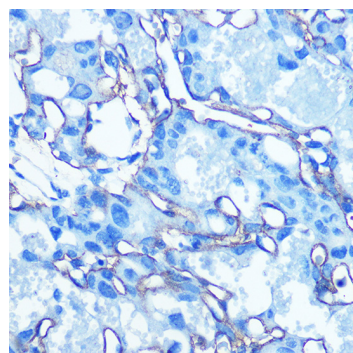
Western blot analysis of lysates from HeLa cells, using GLUT1/SLC2A1 Rabbit pAb (A6982) at 1:2000 dilution.  
Secondary antibody: HRP Goat Anti-Rabbit IgG (H+L) (AS014) at 1:10000 dilution.  
Lysates/proteins: 25ug per lane.  
Blocking buffer: 3% nonfat dry milk in TBST.  
Detection: ECL Basic Kit (RM00020).  
Exposure time: 60s.



Immunohistochemistry analysis of GLUT1/SLC2A1 in paraffin-embedded rat placenta using GLUT1/SLC2A1 Rabbit pAb (A6982) at dilution of 1:100 (40x lens). Perform microwave antigen retrieval with 10 mM Tris/EDTA buffer pH 9.0 before commencing with IHC staining protocol.



Immunohistochemistry analysis of GLUT1/SLC2A1 in paraffin-embedded human placenta using GLUT1/SLC2A1 Rabbit pAb (A6982) at dilution of 1:100 (40x lens). Perform microwave antigen retrieval with 10 mM Tris/EDTA buffer pH 9.0 before commencing with IHC staining protocol.



Immunohistochemistry analysis of GLUT1/SLC2A1 in paraffin-embedded mouse placenta using GLUT1/SLC2A1 Rabbit pAb (A6982) at dilution of 1:100 (40x lens). Perform microwave antigen retrieval with 10 mM Tris/EDTA buffer pH 9.0 before commencing with IHC staining protocol.