

A6963

Leader in Biomolecular Solutions for Life Science



## RARRES2 Rabbit pAb

Catalog No.: A6963

3 Publications

### Basic Information

#### Observed MW

18kDa

#### Calculated MW

19kDa

#### Category

Mouse Monoclonal Antibody

#### Applications

WB,IF/ICC,ELISA

#### Cross-Reactivity

Human,Mouse

### Background

This gene encodes a secreted chemotactic protein that initiates chemotaxis via the ChemR23 G protein-coupled seven-transmembrane domain ligand. Expression of this gene is upregulated by the synthetic retinoid tazarotene and occurs in a wide variety of tissues. The active protein has several roles, including that as an adipokine and as an antimicrobial protein with activity against bacteria and fungi.

### Recommended Dilutions

WB	1:500 - 1:2000
IF/ICC	1:50 - 1:200

### Immunogen Information

#### Gene ID

5919

#### Swiss Prot

Q99969

#### Immunogen

Recombinant fusion protein containing a sequence corresponding to amino acids 17-163 of human RARRES2 (NP\_002880.1).

#### Synonyms

TIG2; HP10433; RARRES2

### Contact



[www.abclonal.com](http://www.abclonal.com)

### Product Information

#### Source

Rabbit

#### Isotype

IgG

#### Purification

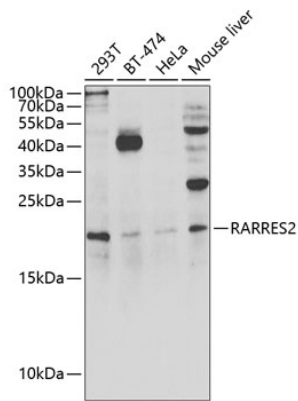
Affinity purification

#### Storage

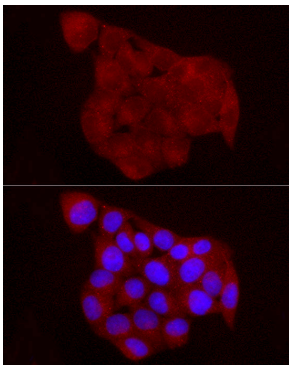
Store at -20°C. Avoid freeze / thaw cycles.

Buffer: PBS with 0.05% proclin300,50% glycerol,pH7.3.

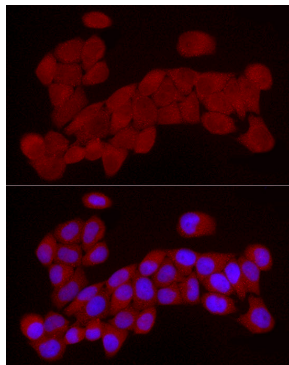
## Validation Data



Western blot analysis of extracts of various cell lines, using RARRES2 antibody (A6963) at 1:1000 dilution.  
Secondary antibody: HRP Goat Anti-Rabbit IgG (H+L) (AS014) at 1:10000 dilution.  
Lysates/proteins: 25µg per lane.  
Blocking buffer: 3% nonfat dry milk in TBST.  
Detection: ECL Enhanced Kit (RM00021).  
Exposure time: 15min.



Immunofluorescence analysis of HeLa cells using RARRES2 Rabbit pAb (A6963) at dilution of 1:50 (40x lens). Blue: DAPI for nuclear staining.



Immunofluorescence analysis of HeLa cells using RARRES2 Rabbit pAb (A6963) at dilution of 1:25 (40x lens). Blue: DAPI for nuclear staining.