

A6829

Leader in Biomolecular Solutions for Life Science



## Legumain (LGMN) Rabbit mAb

Catalog No.: A6829

Recombinant

2 Publications

### Basic Information

#### Observed MW

34kDa/46kDa/56kDa

#### Calculated MW

49kDa

#### Category

SMab Recombinant Monoclonal Antibody

#### Applications

WB, ELISA

#### Cross-Reactivity

Human, Mouse

#### CloneNo number

ARC1864

### Background

This gene encodes a cysteine protease that has a strict specificity for hydrolysis of asparaginyl bonds. This enzyme may be involved in the processing of bacterial peptides and endogenous proteins for MHC class II presentation in the lysosomal/endosomal systems. Enzyme activation is triggered by acidic pH and appears to be autocatalytic. Protein expression occurs after monocytes differentiate into dendritic cells. A fully mature, active enzyme is produced following lipopolysaccharide expression in mature dendritic cells. Overexpression of this gene may be associated with the majority of solid tumor types. This gene has a pseudogene on chromosome 13. Several alternatively spliced transcript variants have been described, but the biological validity of only two has been determined. These two variants encode the same isoform.

### Recommended Dilutions

WB 1:500 - 1:2000

### Immunogen Information

#### Gene ID

5641

#### Swiss Prot

Q99538

#### Immunogen

Recombinant fusion protein containing a sequence corresponding to amino acids 210-302 of human Legumain (LGMN) (Q99538).

#### Synonyms

AEP; LGMN1; PRSC1; Legumain (LGMN)

### Contact



[www.abclonal.com](http://www.abclonal.com)

### Product Information

#### Source

Rabbit

#### Isotype

IgG

#### Purification

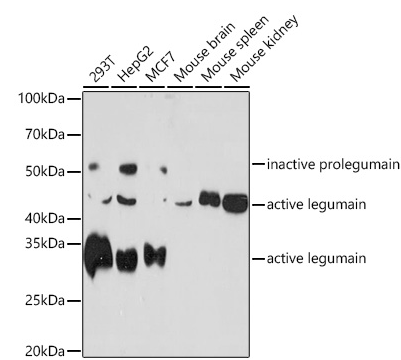
Affinity purification

#### Storage

Store at -20°C. Avoid freeze / thaw cycles.

Buffer: PBS with 0.02% sodium azide, 0.05% BSA, 50% glycerol, pH 7.3.

# Validation Data



Western blot analysis of extracts of various cell lines, using Legumain (LGMN) Rabbit mAb (A6829) at 1:1000 dilution.  
Secondary antibody: HRP Goat Anti-Rabbit IgG (H+L) (AS014) at 1:10000 dilution.  
Lysates/proteins: 25µg per lane.  
Blocking buffer: 3% nonfat dry milk in TBST.  
Detection: ECL Basic Kit (RM00020).  
Exposure time: 60s.