

A6757

Leader in Biomolecular Solutions for Life Science



## SUFU Rabbit pAb

Catalog No.: A6757

3 Publications

### Basic Information

#### Observed MW

55kDa

#### Calculated MW

54kDa

#### Category

Polyclonal Antibody

#### Applications

WB, IHC-P, IF/ICC, ELISA

#### Cross-Reactivity

Human, Mouse, Rat

### Background

The Hedgehog signaling pathway plays an important role in early human development. The pathway is a signaling cascade that plays a role in pattern formation and cellular proliferation during development. This gene encodes a negative regulator of the hedgehog signaling pathway. Defects in this gene are a cause of medulloblastoma. Alternative splicing results in multiple transcript variants.

### Recommended Dilutions

WB	1:500 - 1:2000
IHC-P	1:100 - 1:500
IF/ICC	1:50 - 1:200

### Immunogen Information

#### Gene ID

51684

#### Swiss Prot

Q9UMX1

#### Immunogen

Recombinant fusion protein containing a sequence corresponding to amino acids 325-484 of human SUFU (NP\_057253.2).

#### Synonyms

SUFUH; JBTS32; SUFUXL; PRO1280; SUFU

### Contact



[www.abclonal.com](http://www.abclonal.com)

### Product Information

#### Source

Rabbit

#### Isotype

IgG

#### Purification

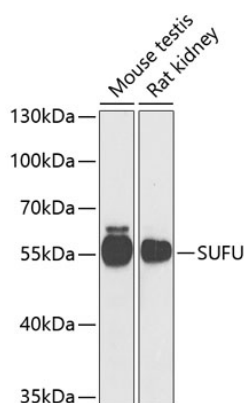
Affinity purification

#### Storage

Store at -20°C. Avoid freeze / thaw cycles.

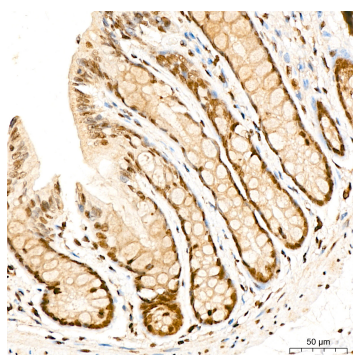
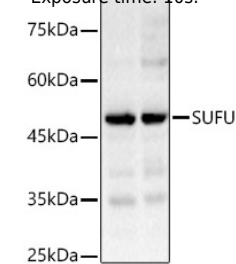
Buffer: PBS with 0.02% sodium azide, 50% glycerol, pH 7.3.

## Validation Data

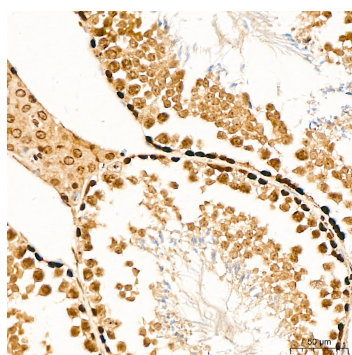


Western blot analysis of various lysates using SUFU Rabbit pAb (A6757) at 1:1000 dilution.  
Secondary antibody: HRP Goat Anti-Rabbit IgG (H+L) (AS014) at 1:10000 dilution.  
Lysates/proteins: 25µg per lane.  
Blocking buffer: 3% nonfat dry milk in TBST.  
Detection: ECL Basic Kit (RM00020).  
Exposure time: 90s.

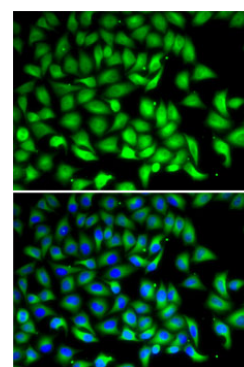
Western blot analysis of various lysates, using SUFU Rabbit pAb (A6757) at 1:1000 dilution.  
Secondary antibody: HRP Goat Anti-Rabbit IgG (H+L) (AS014) at 1:10000 dilution.  
Lysates/proteins: 25µg per lane.  
Blocking buffer: 3% nonfat dry milk in TBST.  
Detection: ECL Enhanced Kit (RM00021).  
Exposure time: 10s.



Immunohistochemistry analysis of SUFU in paraffin-embedded Mouse colon tissue using SUFU Rabbit pAb (A6757) at a dilution of 1:400 (40x lens). High pressure antigen retrieval was performed with 0.01 M citrate buffer (pH 6.0) prior to IHC staining.



Immunohistochemistry analysis of SUFU in paraffin-embedded Mouse testis tissue using SUFU Rabbit pAb (A6757) at a dilution of 1:400 (40x lens). High pressure antigen retrieval was performed with 0.01 M citrate buffer (pH 6.0) prior to IHC staining.



Immunofluorescence analysis of MCF7 cells using SUFU Rabbit pAb (A6757). Secondary antibody: Cy3 Goat Anti-Rabbit IgG (H+L) (AS007) at 1:500 dilution. Blue: DAPI for nuclear staining.