

A6751

Leader in Biomolecular Solutions for Life Science



[KO Validated] SRI Rabbit pAb

Catalog No.: A6751

KO Validated

1 Publications

Basic Information

Observed MW

20kDa

Calculated MW

22kDa

Category

Polyclonal Antibody

Applications

WB, IHC-P, ELISA

Cross-Reactivity

Human, Mouse, Rat

Background

This gene encodes a calcium-binding protein with multiple E-F hand domains that relocates from the cytoplasm to the sarcoplasmic reticulum in response to elevated calcium levels. In addition to regulating intracellular calcium homeostasis it also modulates excitation-contraction coupling in the heart. Alternative splicing results in multiple transcript variants encoding distinct proteins. Multiple pseudogenes exist for this gene.

Recommended Dilutions

WB 1:500 - 1:1000

IHC-P 1:50 - 1:100

Immunogen Information

Gene ID

6717

Swiss Prot

P30626

Immunogen

Recombinant fusion protein containing a sequence corresponding to amino acids 1-198 of human SRI (NP_003121.1).

Synonyms

SCN; V19; CP22; CP-22; RI

Contact



www.abclonal.com

Product Information

Source

Rabbit

Isotype

IgG

Purification

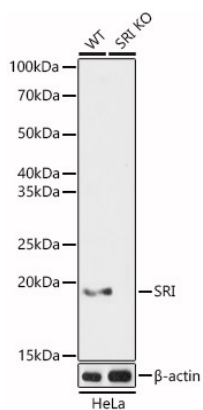
Affinity purification

Storage

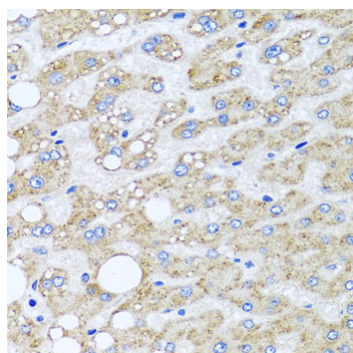
Store at -20°C. Avoid freeze / thaw cycles.

Buffer: PBS with 0.02% sodium azide, 50% glycerol, pH 7.3.

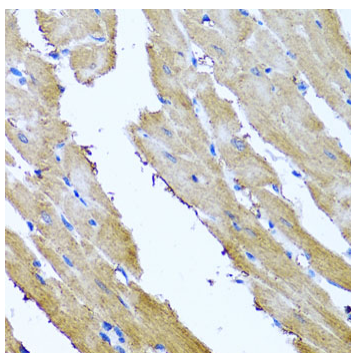
Validation Data



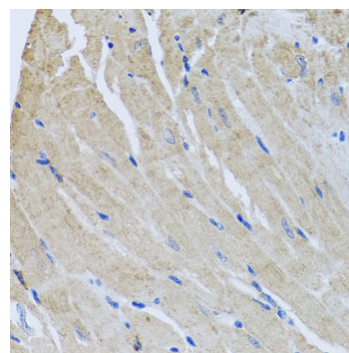
Western blot analysis of extracts from wild type(WT) and SRI knockout (KO) HeLa(KO) cells, using SRI antibody (A6751) at 1:1000 dilution.
 Secondary antibody: HRP Goat Anti-Rabbit IgG (H+L) (AS014) at 1:10000 dilution.
 Lysates/proteins: 25 μ g per lane.
 Blocking buffer: 3% nonfat dry milk in TBST.
 Detection: ECL Basic Kit (RM00020).
 Exposure time: 1s.



Immunohistochemistry analysis of paraffin-embedded human liver tissue using SRI antibody (A6751) at dilution of 1:100 (40x lens). Perform microwave antigen retrieval with 10 mM PBS buffer pH 7.2 before commencing with IHC staining protocol.



Immunohistochemistry analysis of paraffin-embedded rat heart tissue using SRI antibody (A6751) at dilution of 1:100 (40x lens). Perform microwave antigen retrieval with 10 mM PBS buffer pH 7.2 before commencing with IHC staining protocol.



Immunohistochemistry analysis of paraffin-embedded mouse heart tissue using SRI antibody (A6751) at dilution of 1:100 (40x lens). Perform microwave antigen retrieval with 10 mM PBS buffer pH 7.2 before commencing with IHC staining protocol.