

A6745

Leader in Biomolecular Solutions for Life Science



## SMTN Rabbit pAb

Catalog No.: A6745

1 Publications

### Basic Information

#### Observed MW

117kDa

#### Calculated MW

99kDa

#### Category

Polyclonal Antibody

#### Applications

WB, ELISA

#### Cross-Reactivity

Human, Mouse, Rat

### Background

This gene encodes a structural protein that is found exclusively in contractile smooth muscle cells. It associates with stress fibers and constitutes part of the cytoskeleton. This gene is localized to chromosome 22q12.3, distal to the TUPLE1 locus and outside the DiGeorge syndrome deletion. Alternative splicing of this gene results in multiple transcript variants encoding distinct isoforms.

### Recommended Dilutions

WB 1:500 - 1:2000

### Immunogen Information

#### Gene ID

6525

#### Swiss Prot

P53814

#### Immunogen

Recombinant fusion protein containing a sequence corresponding to amino acids 65-325 of human SMTN (NP\_001193946.1).

#### Synonyms

SMTN

### Contact



[www.abclonal.com](http://www.abclonal.com)

### Product Information

#### Source

Rabbit

#### Isotype

IgG

#### Purification

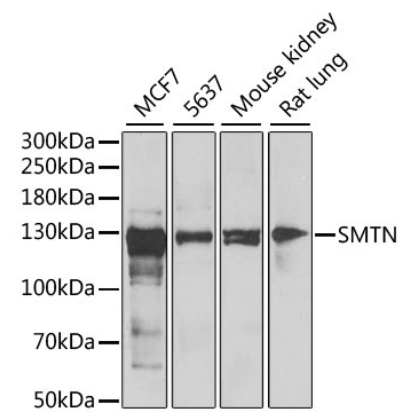
Affinity purification

#### Storage

Store at -20°C. Avoid freeze / thaw cycles.

Buffer: PBS with 0.02% sodium azide, 50% glycerol, pH 7.3.

Validation Data



Western blot analysis of extracts of various cell lines, using SMTN antibody (A6745) at 1:1000 dilution.  
Secondary antibody: HRP Goat Anti-Rabbit IgG (H+L) (AS014) at 1:10000 dilution.  
Lysates/proteins: 25µg per lane.  
Blocking buffer: 3% nonfat dry milk in TBST.  
Detection: ECL Enhanced Kit (RM00021).  
Exposure time: 5min.