

A6736

Leader in Biomolecular Solutions for Life Science



## SECISBP2 Rabbit pAb

Catalog No.: A6736

### Basic Information

#### Observed MW

110kDa

#### Calculated MW

95kDa

#### Category

Mouse Monoclonal Antibody

#### Applications

WB, IHC-P, IF/ICC, ELISA

#### Cross-Reactivity

Human, Mouse, Rat

### Background

The protein encoded by this gene is one of the essential components of the machinery involved in co-translational insertion of selenocysteine (Sec) into selenoproteins. Sec is encoded by the UGA codon, which normally signals translation termination. The recoding of UGA as Sec codon requires a Sec insertion sequence (SECIS) element; present in the 3' untranslated regions of eukaryotic selenoprotein mRNAs. This protein specifically binds to the SECIS element, which is stimulated by a Sec-specific translation elongation factor. Mutations in this gene have been associated with reduction in enzymatic activity of type II iodothyronine deiodinase (a selenoprotein) and abnormal thyroid hormone metabolism. Alternatively spliced transcript variants have been found for this gene.

### Recommended Dilutions

WB	1:100 - 1:500
IHC-P	1:50 - 1:200
IF/ICC	1:50 - 1:200

### Immunogen Information

#### Gene ID

79048

#### Swiss Prot

Q96T21

#### Immunogen

Recombinant fusion protein containing a sequence corresponding to amino acids 585-854 of human SECISBP2 (NP\_076982.3).

#### Synonyms

SBP2; THMA1; SECISBP2

### Contact



[www.abclonal.com](http://www.abclonal.com)

### Product Information

#### Source

Rabbit

#### Isotype

IgG

#### Purification

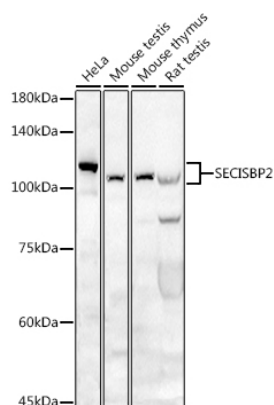
Affinity purification

#### Storage

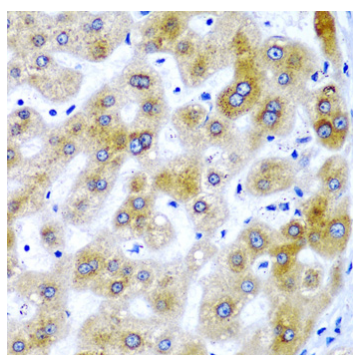
Store at -20°C. Avoid freeze / thaw cycles.

Buffer: PBS with 0.05% proclin300, 50% glycerol, pH7.3.

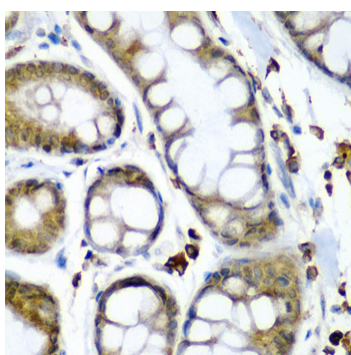
## Validation Data



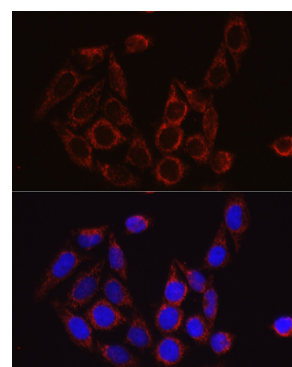
Western blot analysis of extracts of various cell lines, using SECISBP2 antibody (A6736) at 1:500 dilution. Secondary antibody: HRP Goat Anti-Rabbit IgG (H+L) (A5014) at 1:10000 dilution. Lysates/proteins: 25µg per lane. Blocking buffer: 3% nonfat dry milk in TBST. Detection: ECL Basic Kit (RM00020). Exposure time: 180s.



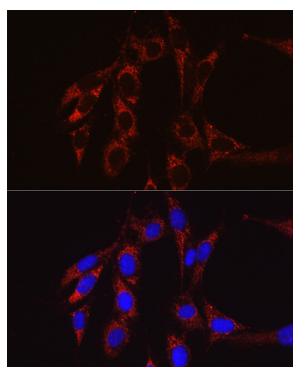
Immunohistochemistry analysis of paraffin-embedded human liver damage using SECISBP2 antibody (A6736) at dilution of 1:200 (40x lens). Perform microwave antigen retrieval with 10 mM PBS buffer pH 7.2 before commencing with IHC staining protocol.



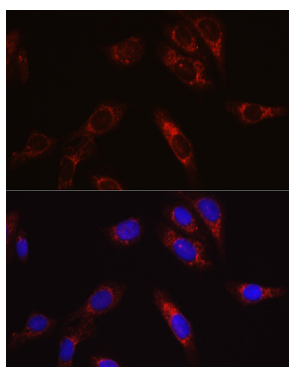
Immunohistochemistry analysis of paraffin-embedded human colon carcinoma using SECISBP2 antibody (A6736) at dilution of 1:200 (40x lens). Perform microwave antigen retrieval with 10 mM PBS buffer pH 7.2 before commencing with IHC staining protocol.



Immunofluorescence analysis of HeLa cells using SECISBP2 Rabbit pAb (A6736) at dilution of 1:50 (40x lens). Blue: DAPI for nuclear staining.



Immunofluorescence analysis of NIH/3T3 cells using SECISBP2 Rabbit pAb (A6736) at dilution of 1:50 (40x lens). Blue: DAPI for nuclear staining.



Immunofluorescence analysis of U2OS cells using SECISBP2 Rabbit pAb (A6736) at dilution of 1:50 (40x lens). Blue: DAPI for nuclear staining.