

A6720

Leader in Biomolecular Solutions for Life Science



## RGS7 Rabbit pAb

Catalog No.: A6720

### Basic Information

**Observed MW**

58kDa

**Calculated MW**

58kDa

**Category**

Polyclonal Antibody

**Applications**

WB, ELISA

**Cross-Reactivity**

Human, Mouse, Rat

### Background

Enables G-protein beta-subunit binding activity and GTPase activator activity. Involved in positive regulation of GTPase activity. Located in cytosol.

### Recommended Dilutions

WB 1:500 - 1:2000

### Immunogen Information

**Gene ID**

6000

**Swiss Prot**

P49802

**Immunogen**

Recombinant fusion protein containing a sequence corresponding to amino acids 1-300 of human RGS7 (NP\_002915.3).

**Synonyms**

RGS7

### Contact



[www.abclonal.com](http://www.abclonal.com)

### Product Information

**Source**

Rabbit

**Isotype**

IgG

**Purification**

Affinity purification

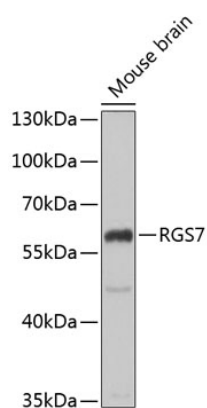
**Storage**

Store at -20°C. Avoid freeze / thaw cycles.

Buffer: PBS with 0.02% sodium azide, 50% glycerol, pH7.3.

## Validation Data

---



Western blot analysis of extracts of mouse brain, using RGS7 antibody (A6720) at 1:1000 dilution.  
Secondary antibody: HRP Goat Anti-Rabbit IgG (H+L) (A5014) at 1:10000 dilution.  
Lysates/proteins: 25µg per lane.  
Blocking buffer: 3% nonfat dry milk in TBST.  
Detection: ECL Basic Kit (RM00020).  
Exposure time: 1s.