

A6714

Leader in Biomolecular Solutions for Life Science



RALB Rabbit pAb

Catalog No.: A6714

Basic Information

Observed MW

23kDa

Calculated MW

23kDa

Category

Polyclonal Antibody

Applications

WB, ELISA

Cross-Reactivity

Human, Mouse, Rat

Background

This gene encodes a GTP-binding protein that belongs to the small GTPase superfamily and Ras family of proteins. GTP-binding proteins mediate the transmembrane signaling initiated by the occupancy of certain cell surface receptors.

Recommended Dilutions

WB 1:500 - 1:2000

Immunogen Information

Gene ID

5899

Swiss Prot

P11234

Immunogen

Recombinant fusion protein containing a sequence corresponding to amino acids 1-206 of human RALB (NP_002872.1).

Synonyms

RALB

Contact



www.abclonal.com

Product Information

Source

Rabbit

Isotype

IgG

Purification

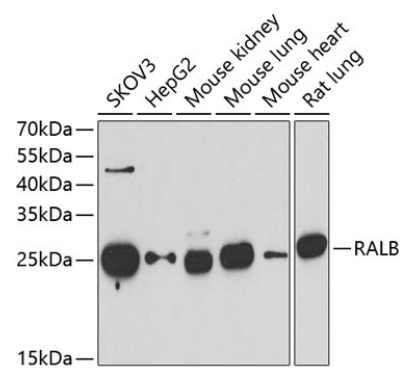
Affinity purification

Storage

Store at -20°C. Avoid freeze / thaw cycles.

Buffer: PBS with 0.02% sodium azide, 50% glycerol, pH 7.3.

Validation Data



Western blot analysis of extracts of various cell lines, using RALB antibody (A6714) at 1:1000 dilution.
Secondary antibody: HRP Goat Anti-Rabbit IgG (H+L) (AS014) at 1:10000 dilution.
Lysates/proteins: 25µg per lane.
Blocking buffer: 3% nonfat dry milk in TBST.
Detection: ECL Basic Kit (RM00020).
Exposure time: 90s.