

QPCT Rabbit pAb

Catalog No.: A6711 **2 Publications**

Basic Information

Observed MW

41kDa

Calculated MW

41kDa

Category

Primary antibody

Applications

ELISA, WB, IF/ICC

Cross-Reactivity

Human, Mouse, Rat

Background

This gene encodes human pituitary glutaminy cyclase, which is responsible for the presence of pyroglutamyl residues in many neuroendocrine peptides. The amino acid sequence of this enzyme is 86% identical to that of bovine glutaminy cyclase.

Recommended Dilutions

WB	1:500 - 1:2000
IF/ICC	1:50 - 1:100

Immunogen Information

Gene ID	Swiss Prot
25797	Q16769

Immunogen

Recombinant fusion protein containing a sequence corresponding to amino acids 1-361 of human QPCT (NP_036545.1).

Synonyms

QC; GCT; sQC; QPCT

Contact

 | www.abclonal.com

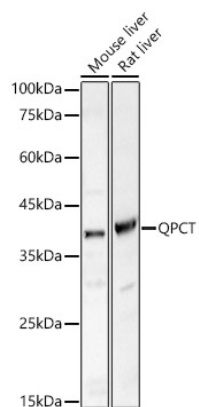
Product Information

Source	Isotype	Purification
Rabbit	IgG	Affinity purification

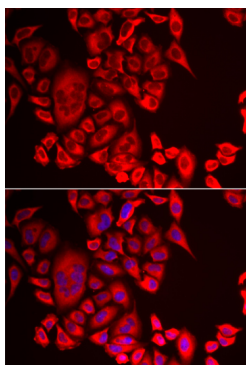
Storage

Store at -20°C. Avoid freeze / thaw cycles.
Buffer: PBS with 0.02% sodium azide, 50% glycerol, pH7.3.

Validation Data



Western blot analysis of various lysates, using QPCT Rabbit pAb (A6711) at 1:2500 dilution. Secondary antibody: HRP Goat Anti-Rabbit IgG (H+L) (A5014) at 1:10000 dilution. Lysates/proteins: 25µg per lane. Blocking buffer: 3% nonfat dry milk in TBST. Detection: ECL Basic Kit (RM00020). Exposure time: 90s.



Immunofluorescence analysis of MCF-7 cells using QPCT antibody (A6711). Blue: DAPI for nuclear staining.