

A6573

Leader in Biomolecular Solutions for Life Science



CYP4V2 Rabbit pAb

Catalog No.: A6573

Basic Information

Observed MW

61kDa

Calculated MW

61kDa

Category

Polyclonal Antibody

Applications

WB,IF/ICC,ELISA

Cross-Reactivity

Human,Mouse,Rat

Background

This gene encodes a member of the cytochrome P450 hemethiolate protein superfamily which are involved in oxidizing various substrates in the metabolic pathway. It is implicated in the metabolism of fatty acid precursors into n-3 polyunsaturated fatty acids. Mutations in this gene result in Bietti crystalline corneoretinal dystrophy.

Recommended Dilutions

WB 1:500 - 1:1000

IF/ICC 1:50 - 1:200

Immunogen Information

Gene ID

285440

Swiss Prot

Q6ZWL3

Immunogen

A synthetic peptide corresponding to a sequence within amino acids 200-300 of human CYP4V2 (NP_997235.3).

Synonyms

BCD; CYP4AH1; CYP4V2

Contact



www.abclonal.com

Product Information

Source

Rabbit

Isotype

IgG

Purification

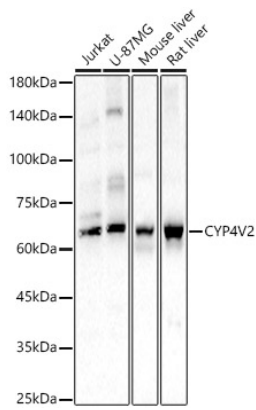
Affinity purification

Storage

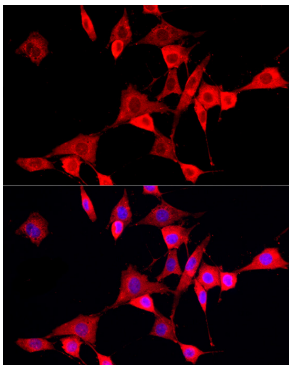
Store at -20°C. Avoid freeze / thaw cycles.

Buffer: PBS with 0.05% proclin300,50% glycerol,pH7.3.

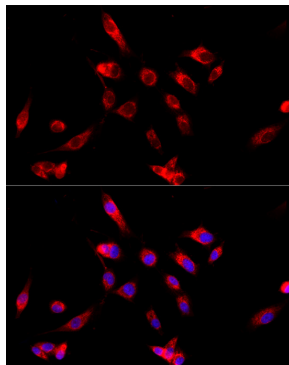
Validation Data



Western blot analysis of various lysates, using CYP4V2 antibody (A6573) at 1:900 dilution. Secondary antibody: HRP Goat Anti-Rabbit IgG (H+L) (A5014) at 1:10000 dilution. Lysates/proteins: 25µg per lane. Blocking buffer: 3% nonfat dry milk in TBST. Detection: ECL Basic Kit (RM00020). Exposure time: 30s.



Immunofluorescence analysis of NIH/3T3 cells using CYP4V2 Rabbit pAb (A6573) at dilution of 1:100 (40x lens). Blue: DAPI for nuclear staining.



Immunofluorescence analysis of U-87MG cells using CYP4V2 Rabbit pAb (A6573) at dilution of 1:100 (40x lens). Blue: DAPI for nuclear staining.