

A6560

Leader in Biomolecular Solutions for Life Science



CLDN2 Rabbit pAb

Catalog No.: A6560

1 Publications

Basic Information

Observed MW

20kDa

Calculated MW

25kDa

Category

Polyclonal Antibody

Applications

WB,IF/ICC,ELISA

Cross-Reactivity

Human

Background

This gene product belongs to the claudin protein family whose members have been identified as major integral membrane proteins localized exclusively at tight junctions. Claudins are expressed in an organ-specific manner and regulate tissue-specific physiologic properties of tight junctions. This protein is expressed in the intestine. Alternatively spliced transcript variants with different 5' untranslated region have been found for this gene.

Recommended Dilutions

WB	1:100 - 1:500
IF/ICC	1:50 - 1:100

Immunogen Information

Gene ID

9075

Swiss Prot

P57739

Immunogen

Recombinant fusion protein containing a sequence corresponding to amino acids 30-230 of human CLDN2 (NP_001164566.1).

Synonyms

OAZON; claudin-2; CLDN2

Contact



www.abclonal.com

Product Information

Source

Rabbit

Isotype

IgG

Purification

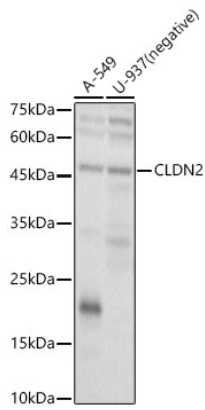
Affinity purification

Storage

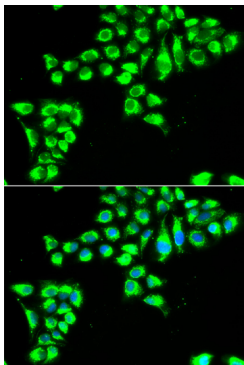
Store at -20°C. Avoid freeze / thaw cycles.

Buffer: PBS with 0.02% sodium azide,50% glycerol,pH7.3.

Validation Data



Western blot analysis of various lysates, using CLDN2 antibody (A6560) at 1:400 dilution.
Secondary antibody: HRP Goat Anti-Rabbit IgG (H+L) (AS014) at 1:10000 dilution.
Lysates/proteins: 25µg per lane.
Blocking buffer: 3% nonfat dry milk in TBST.
Detection: ECL Basic Kit (RM00020).
Exposure time: 10s.



Immunofluorescence analysis of HeLa cells using CLDN2 antibody (A6560). Blue: DAPI for nuclear staining.