

# CCL25 Rabbit pAb

Catalog No.: A6543 **2 Publications**

## Basic Information

### Observed MW

Refer to Figures

### Calculated MW

17kDa

### Category

Primary antibody

### Applications

ELISA, IHC-P

### Cross-Reactivity

Mouse, Rat

## Background

This antimicrobial gene belongs to the subfamily of small cytokine CC genes. Cytokines are a family of secreted proteins involved in immunoregulatory and inflammatory processes. The CC cytokines are proteins characterized by two adjacent cysteines. The cytokine encoded by this gene displays chemotactic activity for dendritic cells, thymocytes, and activated macrophages but is inactive on peripheral blood lymphocytes and neutrophils. The product of this gene binds to chemokine receptor CCR9. Alternative splicing results in multiple transcript variants.

## Recommended Dilutions

IHC-P 1:50 - 1:200

## Immunogen Information

### Gene ID

6370

### Swiss Prot

O15444

### Immunogen

Recombinant fusion protein containing a sequence corresponding to amino acids 24-150 of human CCL25 (NP\_005615.2).

### Synonyms

TECK; Ckb15; SCYA25; TECKvar; Ck beta-15; CCL25

## Contact

 | [www.abclonal.com](http://www.abclonal.com)

## Product Information

### Source

Rabbit

### Isotype

IgG

### Purification

Affinity purification

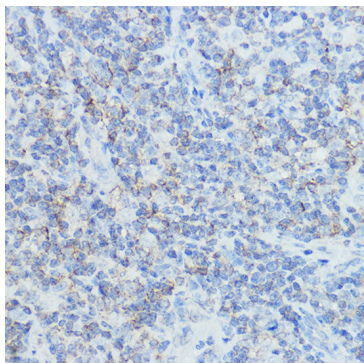
### Storage

Store at -20°C. Avoid freeze / thaw cycles.

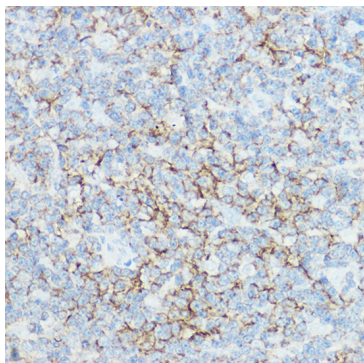
Buffer: PBS with 0.02% sodium azide, 50% glycerol, pH7.3.

## Validation Data

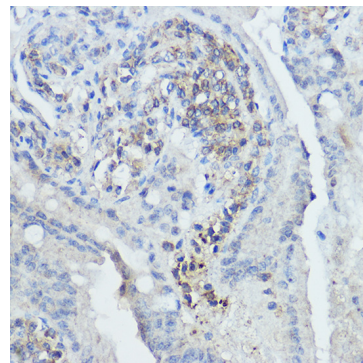
---



Immunohistochemistry analysis of CCL25 in paraffin-embedded mouse thymus using CCL25 Rabbit pAb (A6543) at dilution of 1:100 (40x lens). Perform high pressure antigen retrieval with 10 mM citrate buffer pH 6.0 before commencing with IHC staining protocol.



Immunohistochemistry analysis of CCL25 in paraffin-embedded rat thymus using CCL25 Rabbit pAb (A6543) at dilution of 1:100 (40x lens). Perform high pressure antigen retrieval with 10 mM citrate buffer pH 6.0 before commencing with IHC staining protocol.



Immunohistochemistry analysis of CCL25 in paraffin-embedded mouse intestine using CCL25 Rabbit pAb (A6543) at dilution of 1:100 (40x lens). Perform high pressure antigen retrieval with 10 mM citrate buffer pH 6.0 before commencing with IHC staining protocol.