

A6418

Leader in Biomolecular Solutions for Life Science



## CLEC3B/Tetranectin Rabbit pAb

Catalog No.: A6418

### Basic Information

#### Observed MW

Refer to figures

#### Calculated MW

21kDa

#### Category

Polyclonal Antibody

#### Applications

IF/ICC,ELISA

#### Cross-Reactivity

Human

### Background

Enables calcium ion binding activity; heparin binding activity; and kringle domain binding activity. Involved in bone mineralization and cellular response to transforming growth factor beta stimulus. Located in cytoplasm; extracellular space; and granular component. Part of collagen-containing extracellular matrix. Implicated in osteoarthritis.

### Recommended Dilutions

IF/ICC 1:10 - 1:100

### Immunogen Information

#### Gene ID

7123

#### Swiss Prot

P05452

#### Immunogen

Recombinant fusion protein containing a sequence corresponding to amino acids 22-202 of human CLEC3B/Tetranectin (NP\_003269.2).

#### Synonyms

TN; TNA; MCDR4; CLEC3B/Tetranectin

### Contact



[www.abclonal.com](http://www.abclonal.com)

### Product Information

#### Source

Rabbit

#### Isotype

IgG

#### Purification

Affinity purification

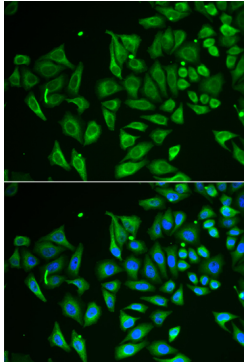
#### Storage

Store at -20°C. Avoid freeze / thaw cycles.

Buffer: PBS with 0.02% sodium azide,50% glycerol,pH7.3.

## Validation Data

---



Immunofluorescence analysis of HeLa cells  
using CLEC3B/Tetranectin antibody (A6418).  
Blue: DAPI for nuclear staining.