

A6382

Leader in Biomolecular Solutions for Life Science



## IRP2 Rabbit pAb

Catalog No.: A6382 **7 Publications**

### Basic Information

#### Observed MW

105kDa

#### Calculated MW

105kDa

#### Category

Polyclonal Antibody

#### Applications

WB, IF/ICC, ELISA

#### Cross-Reactivity

Human, Mouse, Rat

### Background

The protein encoded by this gene is an RNA-binding protein that acts to regulate iron levels in the cells by regulating the translation and stability of mRNAs that affect iron homeostasis under conditions when iron is depleted. When iron levels are low, this protein binds to iron-responsive elements (IRES), stem-loop structures located either in the 5' or 3' UTRs. Binding to the 5' UTR represses translation, while binding to the 3' UTR inhibits mRNA degradation. When iron is found in the cell, this protein is degraded in a F-box and leucine rich repeat protein 5-dependent manner. Variants in this gene have been associated with lung cancer and chronic obstructive pulmonary disease (COPD). Alternative splicing results in multiple transcript variants encoding different isoforms.

### Recommended Dilutions

WB 1:500 - 1:1000

IF/ICC 1:20 - 1:50

### Immunogen Information

#### Gene ID

3658

#### Swiss Prot

P48200

#### Immunogen

Recombinant fusion protein containing a sequence corresponding to amino acids 760-963 of human IRP2 (NP\_004127.1).

#### Synonyms

ACO3; IRP2; IRP2AD; NDCAMA; IRE-BP2; IRE-BP 2

### Contact



[www.abclonal.com](http://www.abclonal.com)

### Product Information

#### Source

Rabbit

#### Isotype

IgG

#### Purification

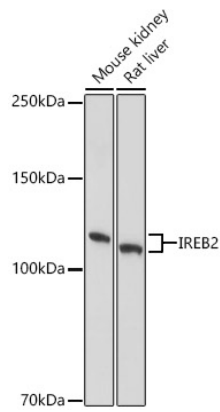
Affinity purification

#### Storage

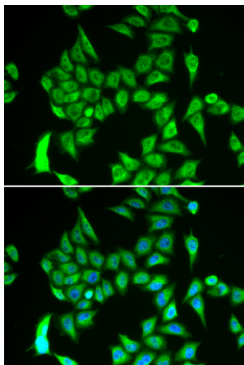
Store at -20°C. Avoid freeze / thaw cycles.

Buffer: PBS with 0.05% proclin300, 50% glycerol, pH7.3.

## Validation Data



Western blot analysis of extracts of various cell lines, using IRP2 antibody (A6382) at 1:1000 dilution.  
Secondary antibody: HRP Goat Anti-Rabbit IgG (H+L) (A5014) at 1:10000 dilution.  
Lysates/proteins: 25µg per lane.  
Blocking buffer: 3% nonfat dry milk in TBST.  
Detection: ECL Basic Kit (RM00020).  
Exposure time: 3s.



Immunofluorescence analysis of A549 cells using IRP2 antibody (A6382). Blue: DAPI for nuclear staining.