

A6344

Leader in Biomolecular Solutions for Life Science



Synaptophysin Rabbit pAb

Catalog No.: A6344

15 Publications

Basic Information

Observed MW

38kDa

Calculated MW

34kDa

Category

Mouse Monoclonal Antibody

Applications

WB, IHC-P, IF/ICC, IP, ELISA

Cross-Reactivity

Human, Mouse, Rat

Background

This gene encodes an integral membrane protein of small synaptic vesicles in brain and endocrine cells. The protein also binds cholesterol and is thought to direct targeting of vesicle-associated membrane protein 2 (synaptobrevin) to intracellular compartments. Mutations in this gene are associated with an X-linked form of cognitive disability.

Recommended Dilutions

| | |
|--------|--|
| WB | 1:500 - 1:1000 |
| IHC-P | 1:50 - 1:200 |
| IF/ICC | 1:50 - 1:200 |
| IP | 0.5µg-4µg antibody for 400µg-600µg extracts of whole cells |

Immunogen Information

Gene ID

6855

Swiss Prot

P08247

Immunogen

Recombinant fusion protein containing a sequence corresponding to amino acids 222-313 of human Synaptophysin (NP_003170.1).

Synonyms

MRX96; MRXSYP; XLID96; Synaptophysin

Contact



www.abclonal.com

Product Information

Source

Rabbit

Isotype

IgG

Purification

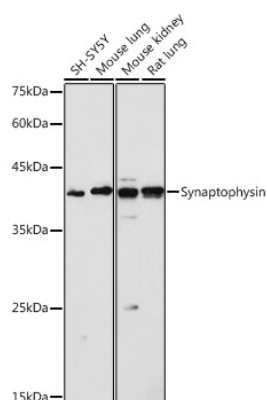
Affinity purification

Storage

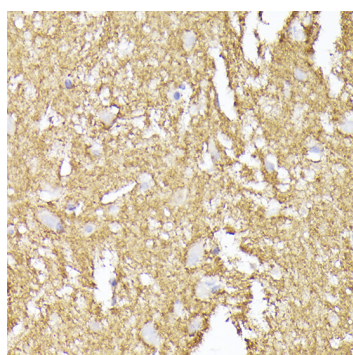
Store at -20°C. Avoid freeze / thaw cycles.

Buffer: PBS with 0.05% proclin300, 50% glycerol, pH7.3.

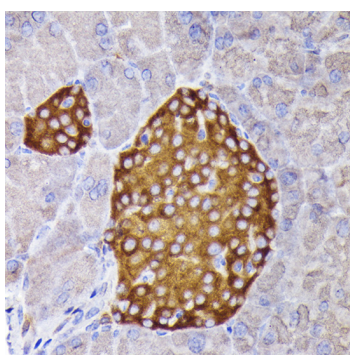
Validation Data



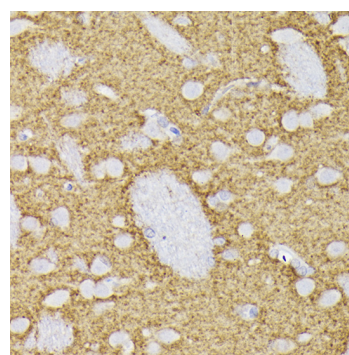
Western blot analysis of various lysates using Synaptophysin Rabbit pAb (A6344) at 1:1000 dilution.
Secondary antibody: HRP Goat Anti-Rabbit IgG (H+L) (AS014) at 1:10000 dilution.
Lysates/proteins: 25µg per lane.
Blocking buffer: 3% nonfat dry milk in TBST.
Detection: ECL Basic Kit (RM00020).
Exposure time: 1s.



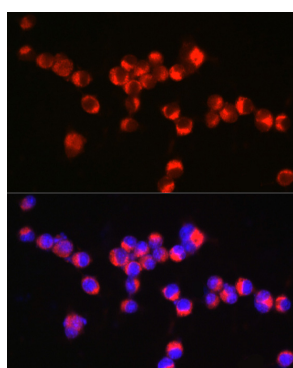
Immunohistochemistry analysis of Synaptophysin in paraffin-embedded human brain using Synaptophysin Rabbit pAb (A6344) at dilution of 1:200 (40x lens). Perform high pressure antigen retrieval with 10 mM citrate buffer pH 6.0 before commencing with IHC staining protocol.



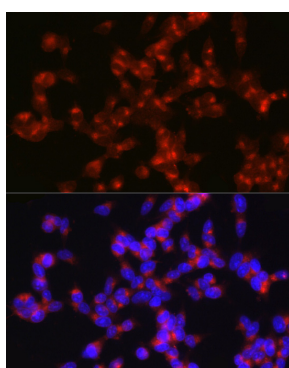
Immunohistochemistry analysis of Synaptophysin in paraffin-embedded mouse pancreatic islet using Synaptophysin Rabbit pAb (A6344) at dilution of 1:200 (40x lens). Perform high pressure antigen retrieval with 10 mM citrate buffer pH 6.0 before commencing with IHC staining protocol.



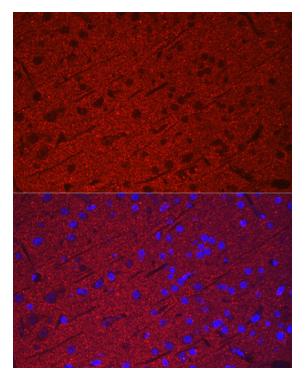
Immunohistochemistry analysis of Synaptophysin in paraffin-embedded rat brain using Synaptophysin Rabbit pAb (A6344) at dilution of 1:200 (40x lens). Perform high pressure antigen retrieval with 10 mM citrate buffer pH 6.0 before commencing with IHC staining protocol.



Immunofluorescence analysis of Neuro-2a cells using Synaptophysin Rabbit pAb (A6344) at dilution of 1:100 (40x lens). Secondary antibody: Cy3 Goat Anti-Rabbit IgG (H+L) (AS007) at 1:500 dilution. Blue: DAPI for nuclear staining.

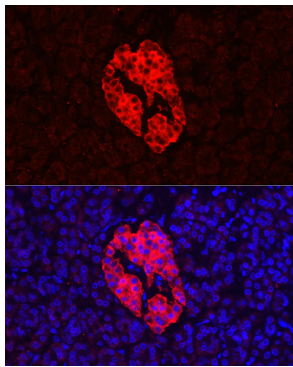


Immunofluorescence analysis of SH-SY5Y cells using Synaptophysin Rabbit pAb (A6344) at dilution of 1:100 (40x lens). Secondary antibody: Cy3 Goat Anti-Rabbit IgG (H+L) (AS007) at 1:500 dilution. Blue: DAPI for nuclear staining.

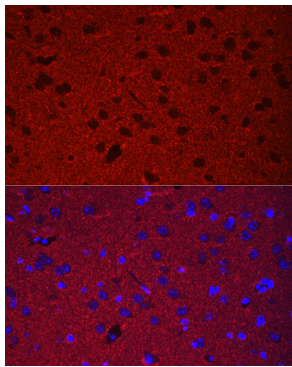


Immunofluorescence analysis of paraffin-embedded rat brain using Synaptophysin Rabbit pAb (A6344) at dilution of 1:100 (40x lens). Secondary antibody: Cy3 Goat Anti-Rabbit IgG (H+L) (AS007) at 1:500 dilution. Blue: DAPI for nuclear staining.

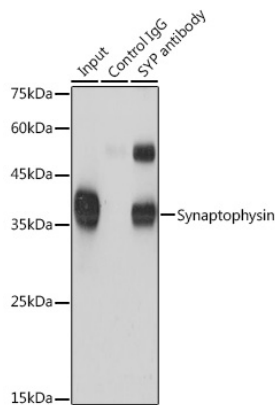
Validation Data



Immunofluorescence analysis of paraffin-embedded human pancreas using Synaptophysin Rabbit pAb (A6344) at dilution of 1:100 (40x lens). Secondary antibody: Cy3 Goat Anti-Rabbit IgG (H+L) (AS007) at 1:500 dilution. Blue: DAPI for nuclear staining.



Immunofluorescence analysis of paraffin-embedded mouse brain using Synaptophysin Rabbit pAb (A6344) at dilution of 1:100 (40x lens). Secondary antibody: Cy3 Goat Anti-Rabbit IgG (H+L) (AS007) at 1:500 dilution. Blue: DAPI for nuclear staining.



Immunoprecipitation analysis of 600 µg extracts of Mouse brain cells using 3 µg Synaptophysin antibody (A6344). Western blot was performed from the immunoprecipitate using Synaptophysin antibody (A6344) at a dilution of 1:1000.