

A6293

Leader in Biomolecular Solutions for Life Science



Glucokinase (GCK) Rabbit pAb

Catalog No.: A6293

7 Publications

Basic Information

Observed MW

52kDa

Calculated MW

52kDa

Category

Mouse Monoclonal Antibody

Applications

WB, ELISA

Cross-Reactivity

Human, Mouse, Rat

Background

This gene encodes a member of the hexokinase family of proteins. Hexokinases phosphorylate glucose to produce glucose-6-phosphate, the first step in most glucose metabolism pathways. In contrast to other forms of hexokinase, this enzyme is not inhibited by its product glucose-6-phosphate but remains active while glucose is abundant. The use of multiple promoters and alternative splicing of this gene result in distinct protein isoforms that exhibit tissue-specific expression in the pancreas and liver. In the pancreas, this enzyme plays a role in glucose-stimulated insulin secretion, while in the liver, this enzyme is important in glucose uptake and conversion to glycogen. Mutations in this gene that alter enzyme activity have been associated with multiple types of diabetes and hyperinsulinemic hypoglycemia.

Recommended Dilutions

WB 1:500 - 1:2000

Immunogen Information

Gene ID

2645

Swiss Prot

P35557

Immunogen

Recombinant fusion protein containing a sequence corresponding to amino acids 1-300 of human Glucokinase (GCK) (NP_000153.1).

Synonyms

GK; GLK; HK4; HHF3; HKIV; HXKP; LGLK; MODY2; PNDM1; FGQL3; Glucokinase (GCK)

Contact



www.abclonal.com

Product Information

Source

Rabbit

Isotype

IgG

Purification

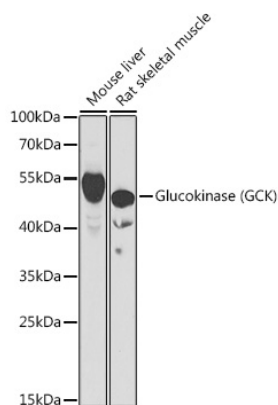
Affinity purification

Storage

Store at -20°C. Avoid freeze / thaw cycles.

Buffer: PBS with 0.02% sodium azide, 50% glycerol, pH 7.3.

Validation Data



Western blot analysis of various lysates using Glucokinase (GCK) Rabbit pAb (A6293) at 1:1000 dilution.
Secondary antibody: HRP Goat Anti-Rabbit IgG (H+L) (A5014) at 1:10000 dilution.
Lysates/proteins: 25µg per lane.
Blocking buffer: 3% nonfat dry milk in TBST.
Detection: ECL Basic Kit (RM00020).
Exposure time: 60s.