

A6244

Leader in Biomolecular Solutions for Life Science



## PHLDA2 Rabbit pAb

Catalog No.: A6244

### Basic Information

#### Observed MW

20kDa

#### Calculated MW

17kDa

#### Category

Mouse Monoclonal Antibody

#### Applications

WB,IF/ICC,ELISA

#### Cross-Reactivity

Human,Mouse

### Background

This gene is located in a cluster of imprinted genes on chromosome 11p15.5, which is considered to be an important tumor suppressor gene region. Alterations in this region may be associated with the Beckwith-Wiedemann syndrome, Wilms tumor, rhabdomyosarcoma, adrenocortical carcinoma, and lung, ovarian, and breast cancer. This gene has been shown to be imprinted, with preferential expression from the maternal allele in placenta and liver.

### Recommended Dilutions

WB 1:2000 - 1:4000

IF/ICC 1:100 - 1:500

### Immunogen Information

#### Gene ID

7262

#### Swiss Prot

Q53GA4

#### Immunogen

Recombinant fusion protein containing a sequence corresponding to amino acids 1-152 of human PHLDA2 (NP\_003302.1).

#### Synonyms

IPL; BRW1C; BWR1C; HLDA2; TSSC3; PHLDA2

### Contact



[www.abclonal.com](http://www.abclonal.com)

### Product Information

#### Source

Rabbit

#### Isotype

IgG

#### Purification

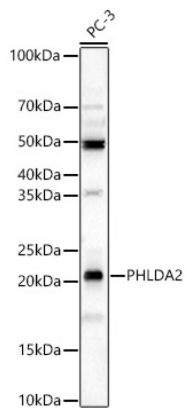
Affinity purification

#### Storage

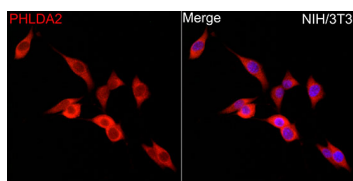
Store at -20°C. Avoid freeze / thaw cycles.

Buffer: PBS with 0.02% sodium azide,50% glycerol,pH7.3.

## Validation Data



Western blot analysis of lysates from PC-3 cells using PHLDA2 Rabbit pAb(A6244) at 1:4000 dilution.  
Secondary antibody:HRP Goat Anti-Rabbit IgG (H+L)(AS014) at 1:10000 dilution.  
Lysates/proteins: 25 µg per lane.  
Blocking buffer: 3% nonfat dry milk in TBST.  
Detection:ECL Basic Kit (RM00020).  
Exposure time:180s.



Immunofluorescence analysis of NIH/3T3 cells using PHLDA2 Rabbit pAb (A6244) at dilution of 1:500 (40x lens). Secondary antibody: Cy3 Goat Anti-Rabbit IgG (H+L) (AS007) at 1:500 dilution. Blue: DAPI for nuclear staining.