

A6211

Leader in Biomolecular Solutions for Life Science



PAI-1/Serpin E1 Rabbit pAb

Catalog No.: A6211

4 Publications

Basic Information

Observed MW

48kDa

Calculated MW

45kDa

Category

Mouse Monoclonal Antibody

Applications

WB,IF/ICC,ELISA

Cross-Reactivity

Human,Mouse,Rat

Background

This gene encodes a member of the serine proteinase inhibitor (serpin) superfamily. This member is the principal inhibitor of tissue plasminogen activator (tPA) and urokinase (uPA), and hence is an inhibitor of fibrinolysis. The protein also functions as a component of innate antiviral immunity. Defects in this gene are the cause of plasminogen activator inhibitor-1 deficiency (PAI-1 deficiency), and high concentrations of the gene product are associated with thrombophilia.

Recommended Dilutions

WB	1:500 - 1:1000
IF/ICC	1:50 - 1:200

Immunogen Information

Gene ID

5054

Swiss Prot

P05121

Immunogen

A synthetic peptide corresponding to a sequence within amino acids 24-199 of human PAI-1/Serpin E1 (NP_000593.1).

Synonyms

PAI; PAI1; PAI-1; PLANH1; PAI-1/Serpin E1

Contact



www.abclonal.com

Product Information

Source

Rabbit

Isotype

IgG

Purification

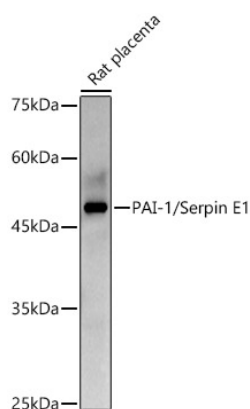
Affinity purification

Storage

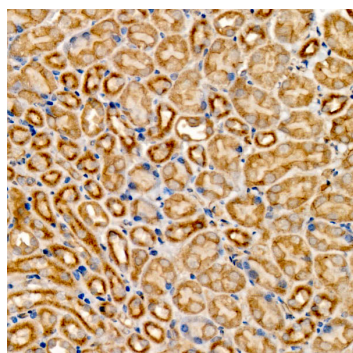
Store at -20°C. Avoid freeze / thaw cycles.

Buffer: PBS with 0.05% proclin300,50% glycerol,pH7.3.

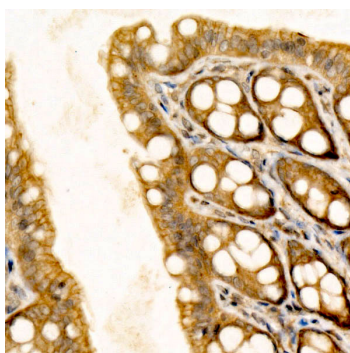
Validation Data



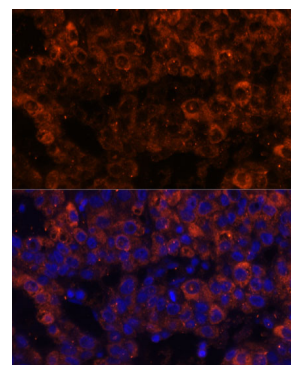
Western blot analysis of lysates from Rat placenta, using PAI-1/Serpin E1 Rabbit pAb (A6211) at 1:1000 dilution.
Secondary antibody: HRP Goat Anti-Rabbit IgG (H+L) (AS014) at 1:10000 dilution.
Lysates/proteins: 25µg per lane.
Blocking buffer: 3% nonfat dry milk in TBST.
Detection: ECL Basic Kit (RM00020).
Exposure time: 180s.



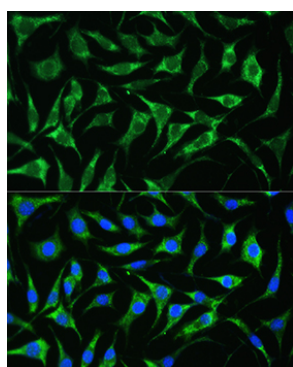
Immunohistochemistry analysis of PAI-1/Serpin E1 in paraffin-embedded mouse kidney tissue using PAI-1/Serpin E1 Rabbit pAb (A6211) at a dilution of 1:300 (40x lens). High pressure antigen retrieval was performed with 0.01 M citrate buffer (pH 6.0) prior to IHC staining.



Immunohistochemistry analysis of PAI-1/Serpin E1 in paraffin-embedded rat colon tissue using PAI-1/Serpin E1 Rabbit pAb (A6211) at a dilution of 1:300 (40x lens). High pressure antigen retrieval was performed with 0.01 M citrate buffer (pH 6.0) prior to IHC staining.



Immunofluorescence analysis of paraffin-embedded human liver cancer using PAI-1/Serpin E1 Rabbit pAb (A6211) at dilution of 1:100 (40x lens). Secondary antibody: Cy3 Goat Anti-Rabbit IgG (H+L) (AS007) at 1:500 dilution. Blue: DAPI for nuclear staining.



Immunofluorescence analysis of L929 cells using PAI-1/Serpin E1 Rabbit pAb (A6211) at dilution of 1:100. Secondary antibody: Cy3 Goat Anti-Rabbit IgG (H+L) (AS007) at 1:500 dilution. Blue: DAPI for nuclear staining.